

Johnson & Johnson

Bioscience Park Leiden

23 april 2021

POWERHOUSE

INHOUD

01 Kavel en oriëntatie

02 Het ontwerp

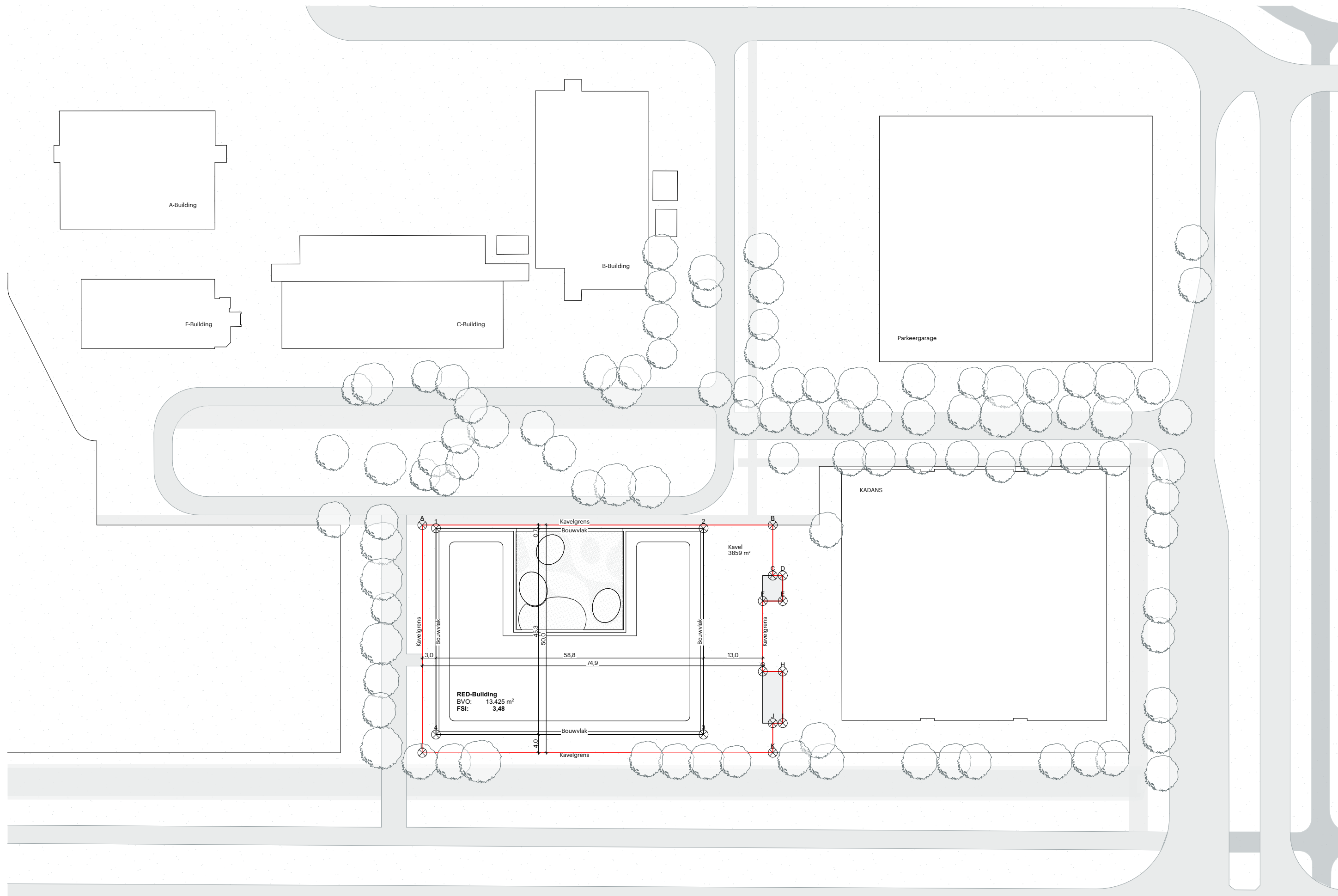
03 Materialistatie en detaillering

04 Ecologie

01 KAVEL EN ORIENTATIE

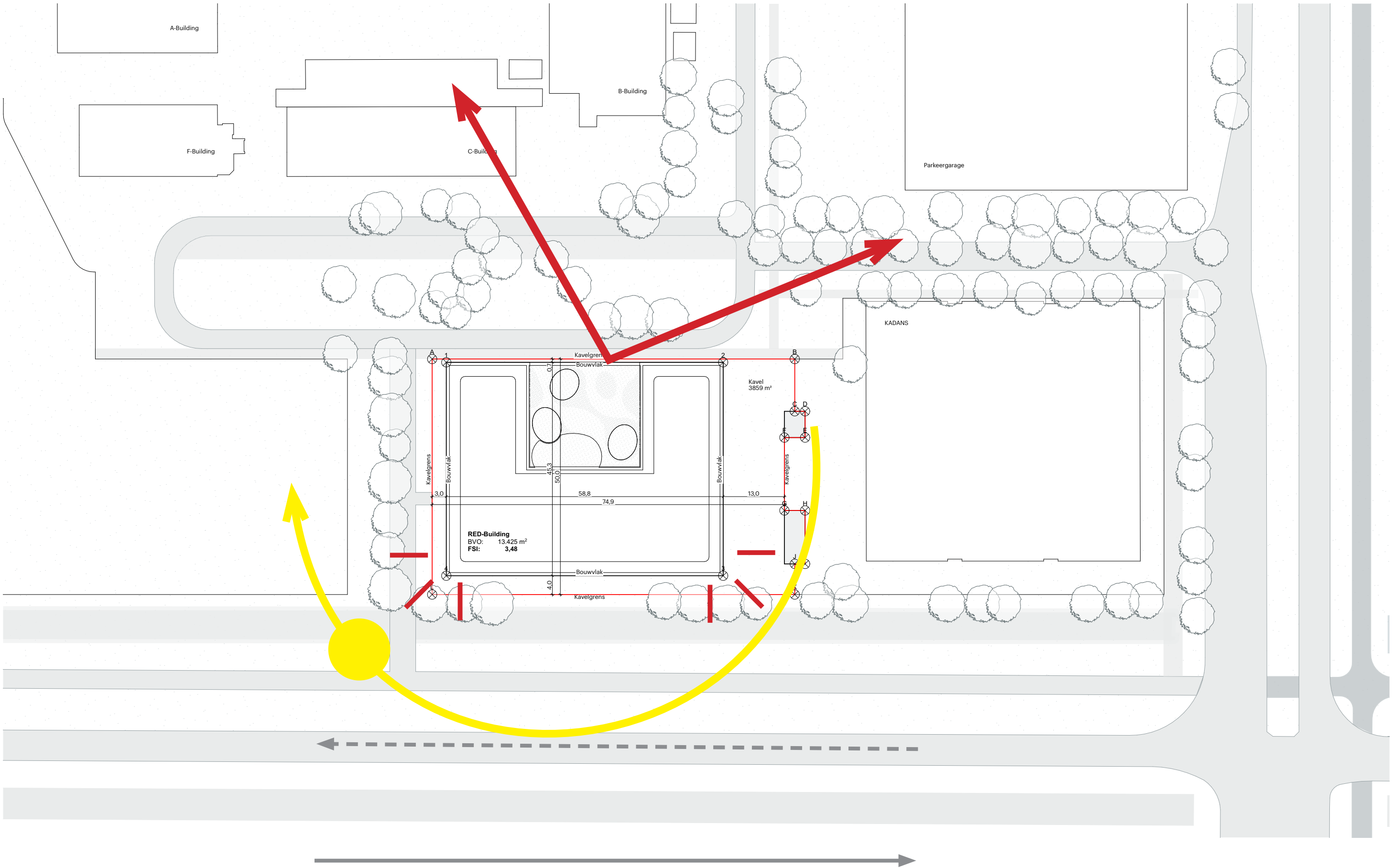
LOCATIE



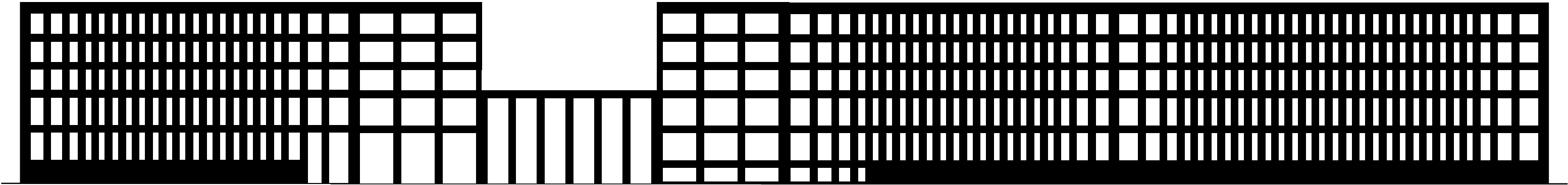


02 HET ONTWERP

CONCEPT



GEVEL CONCEPT







SECTIONS
doorsnede B-B



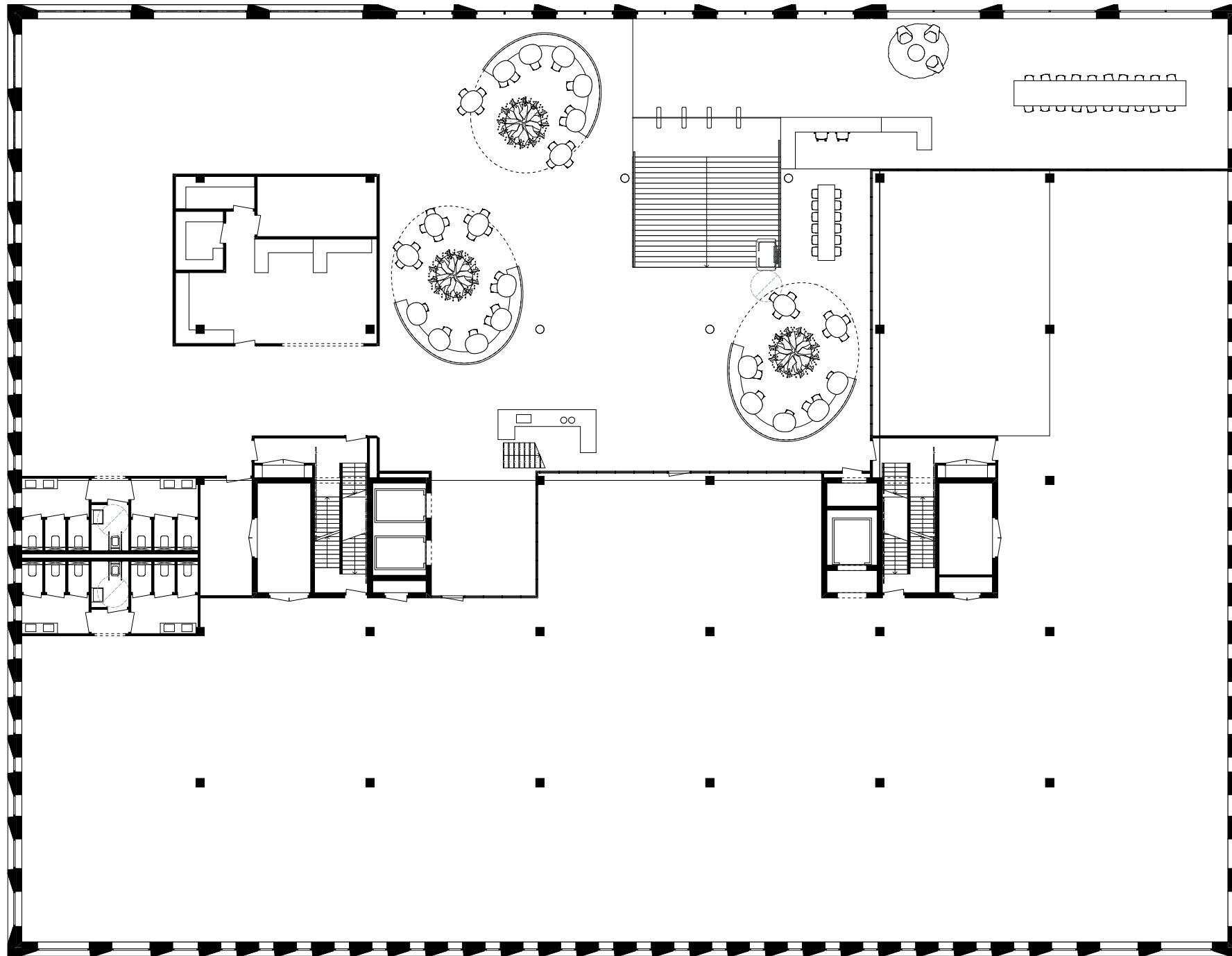
FLOORPLANS

Ground floor - entrance



FLOORPLANS

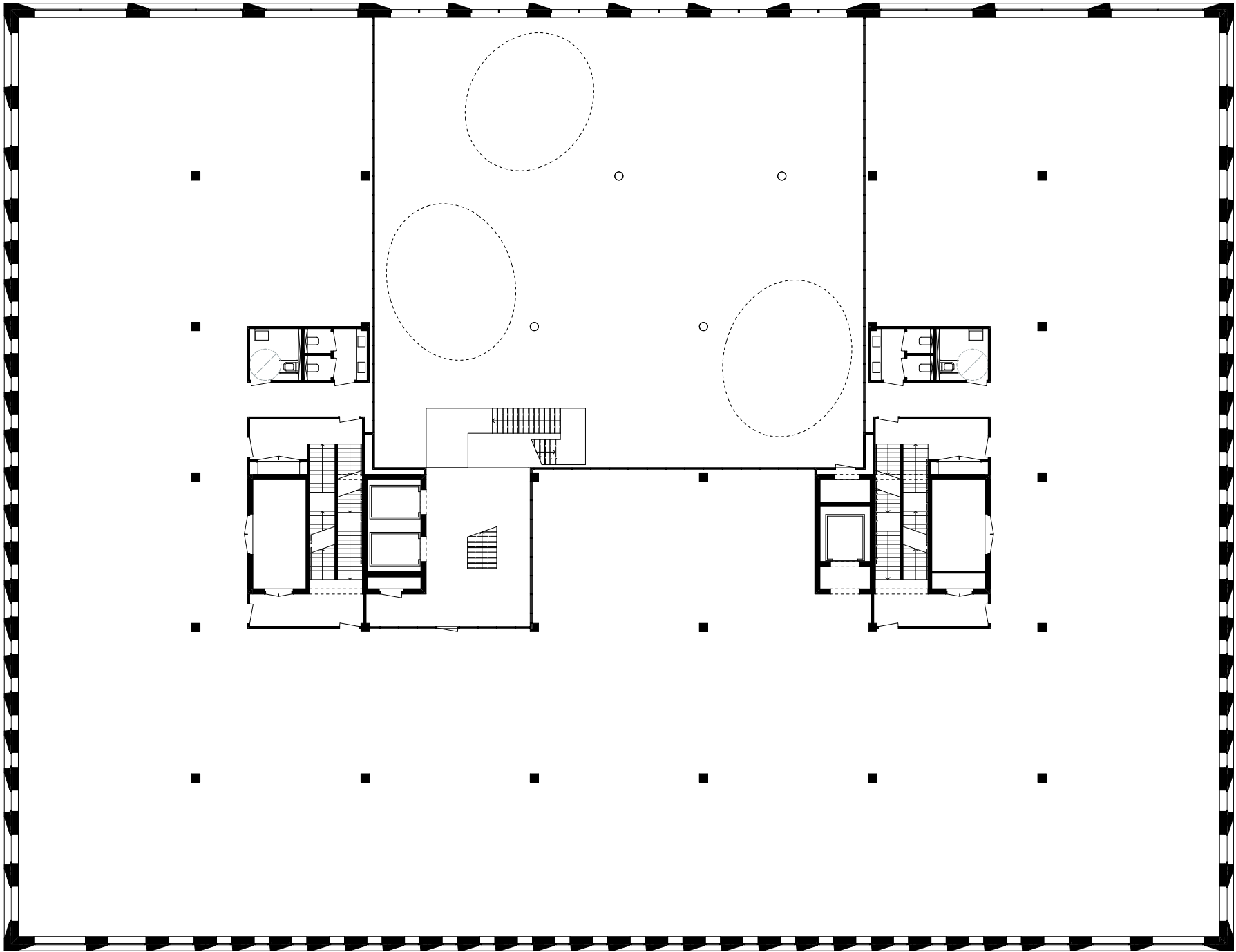
1st floor - atrium/labs





FLOORPLANS

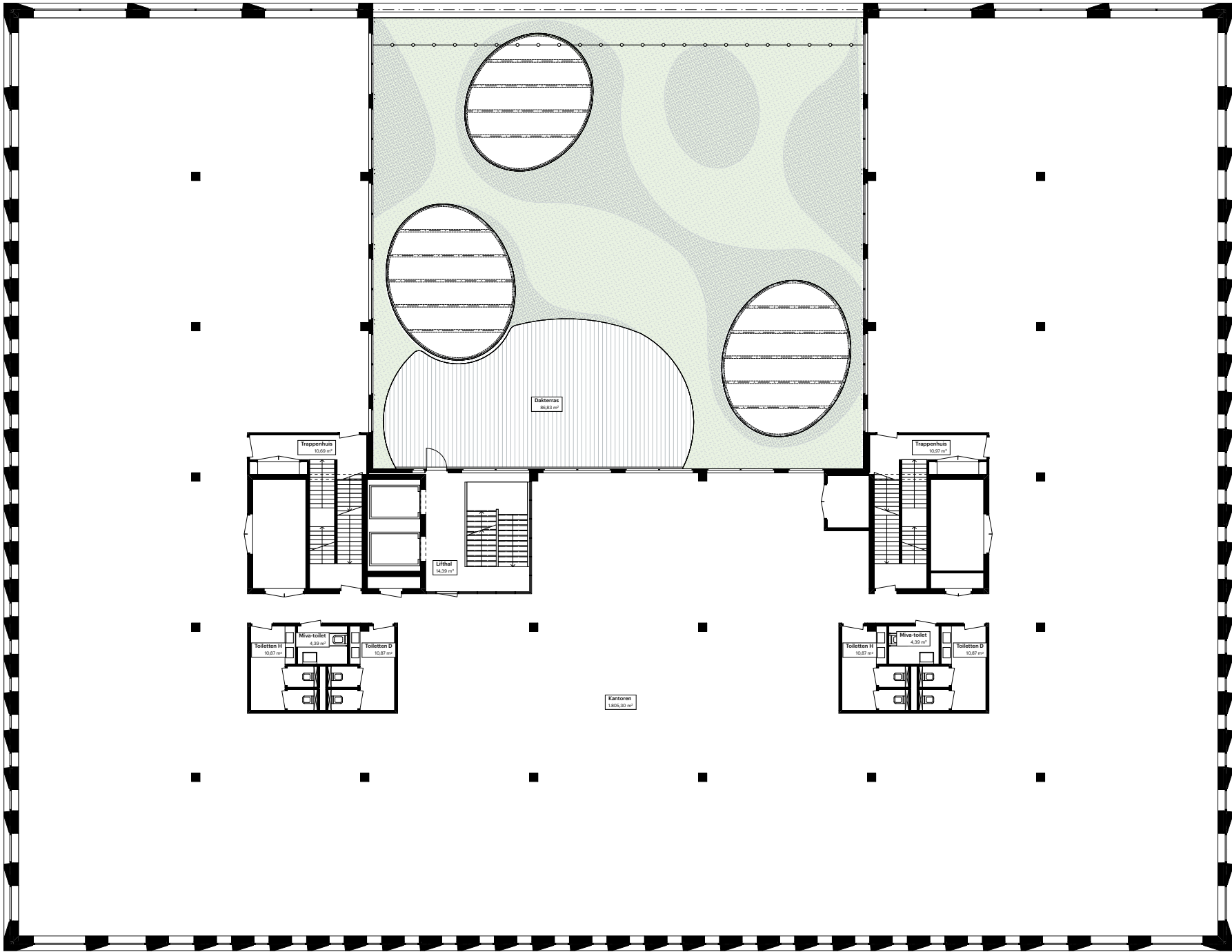
2nd floor - labs



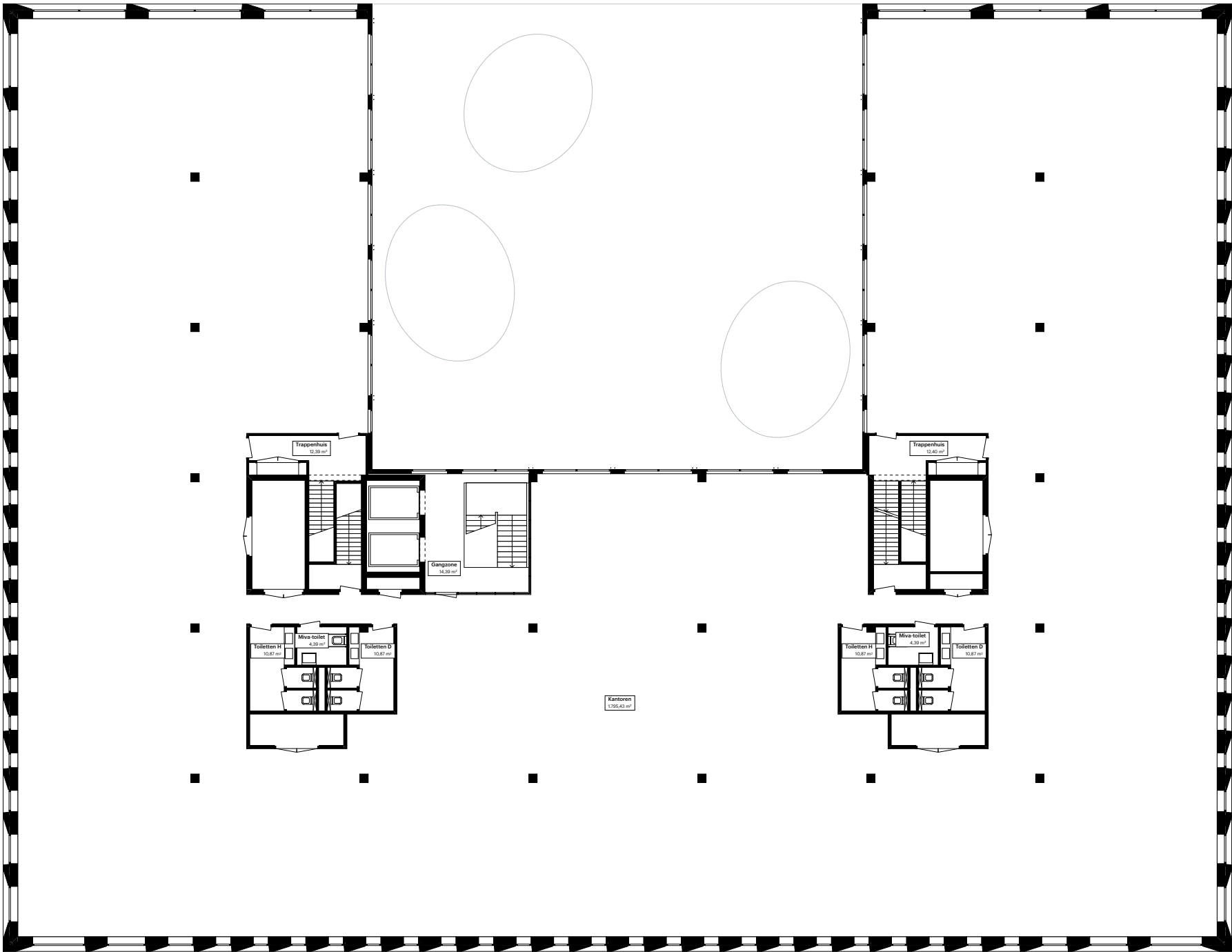


FLOORPLANS

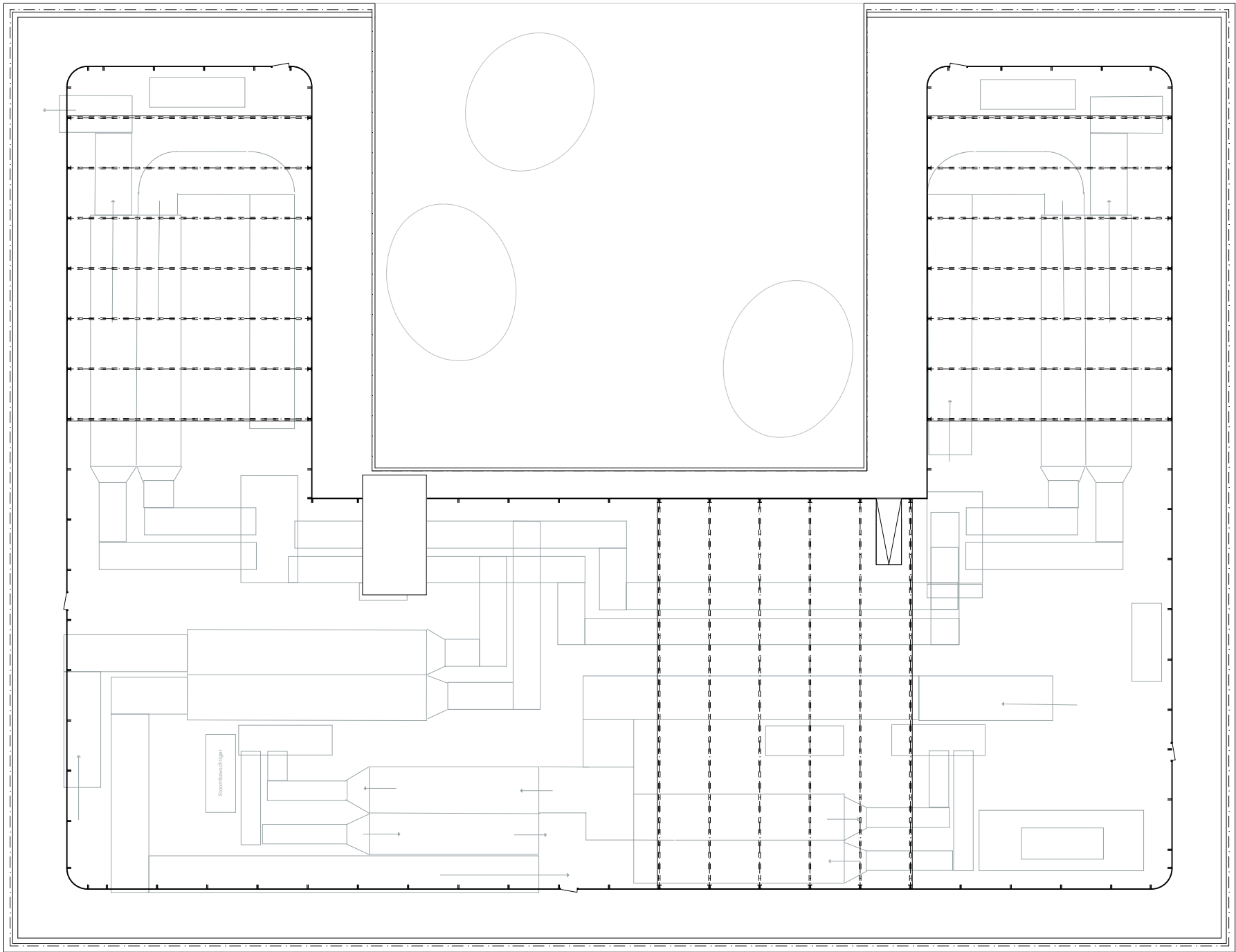
3nd floor - atrium terrace



FLOORPLANS
4th-5th floor - office



FLOORPLANS
roof - installations

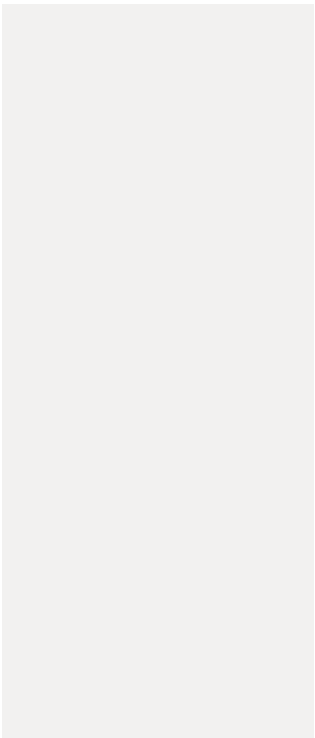


03 MATERIALISATIE EN DETAILLING

MATERIALEN GEVEL



Prefab beton titanium toeslag



Wit aluminium



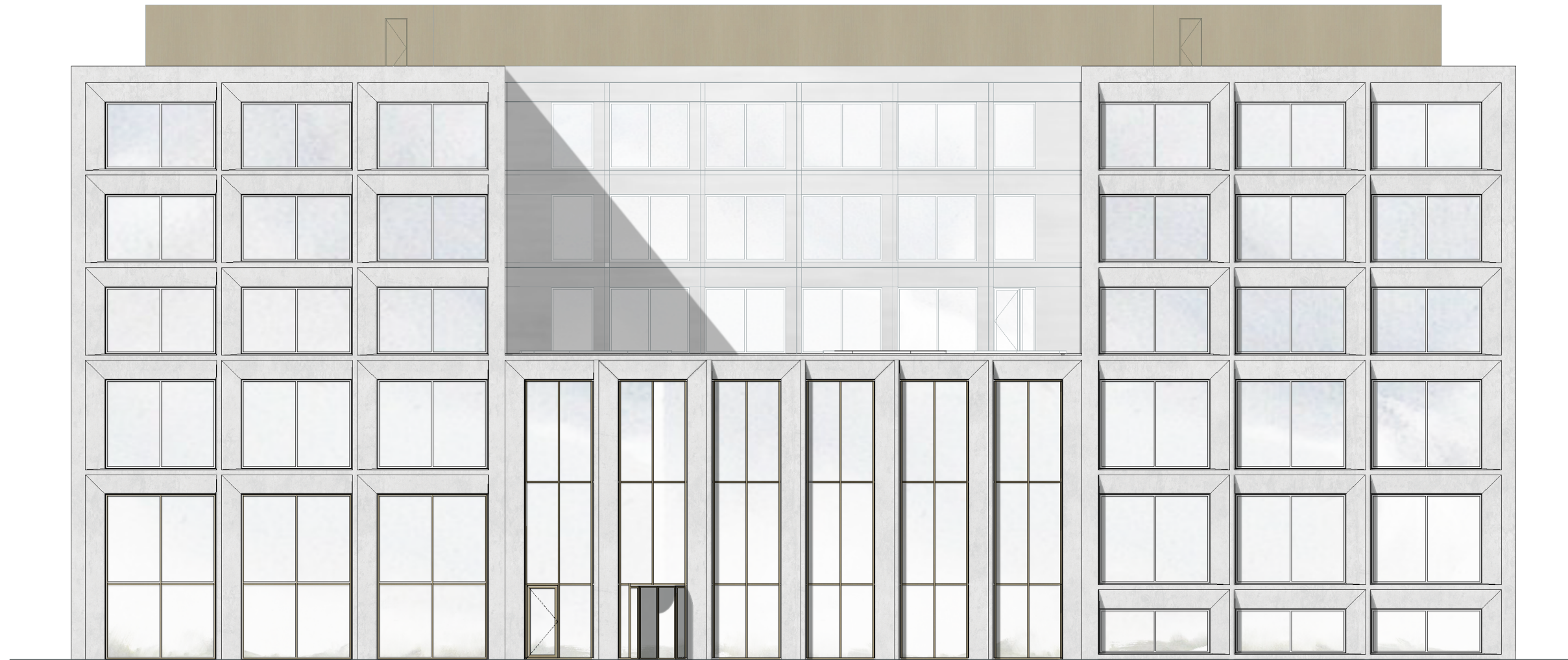
Geannodiseerd aluminium



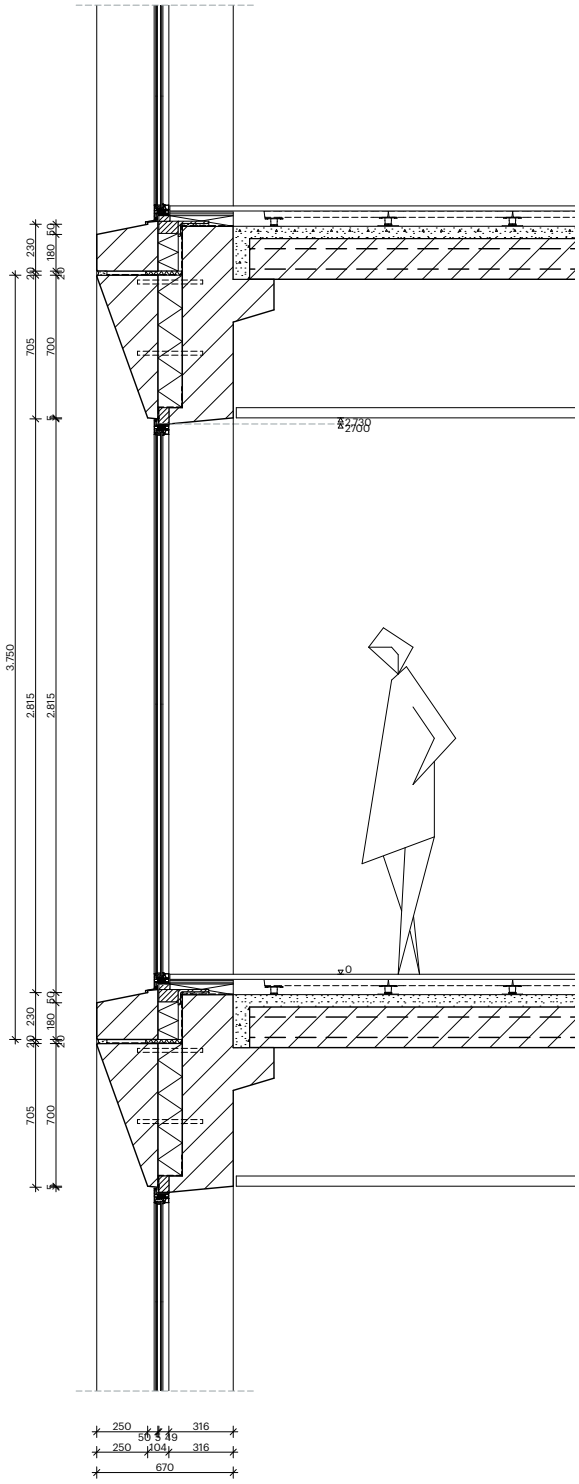
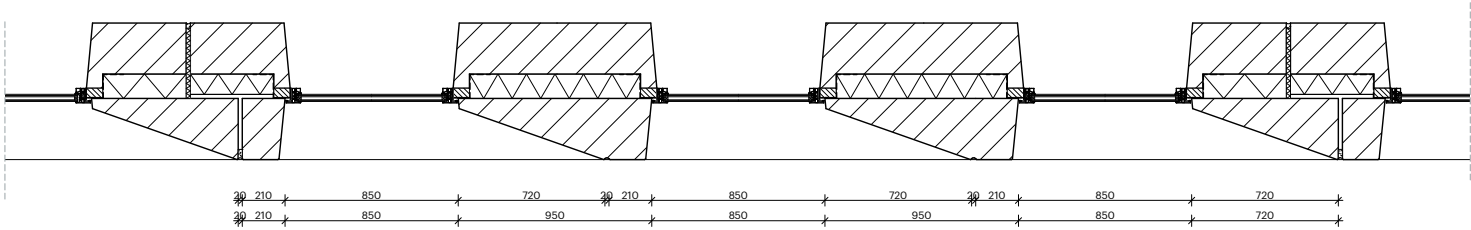
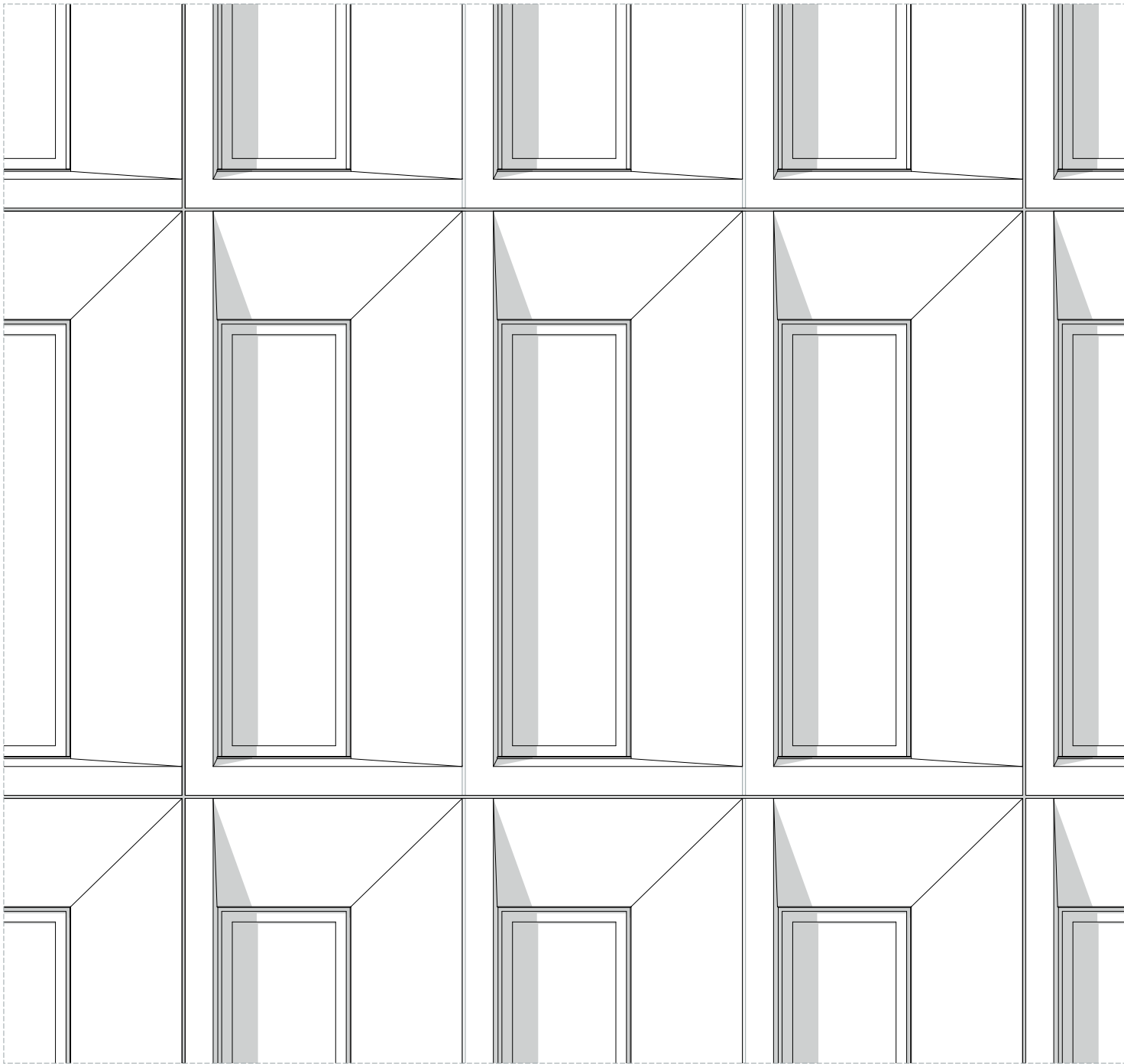
Glas

FACADES

Noordgevel

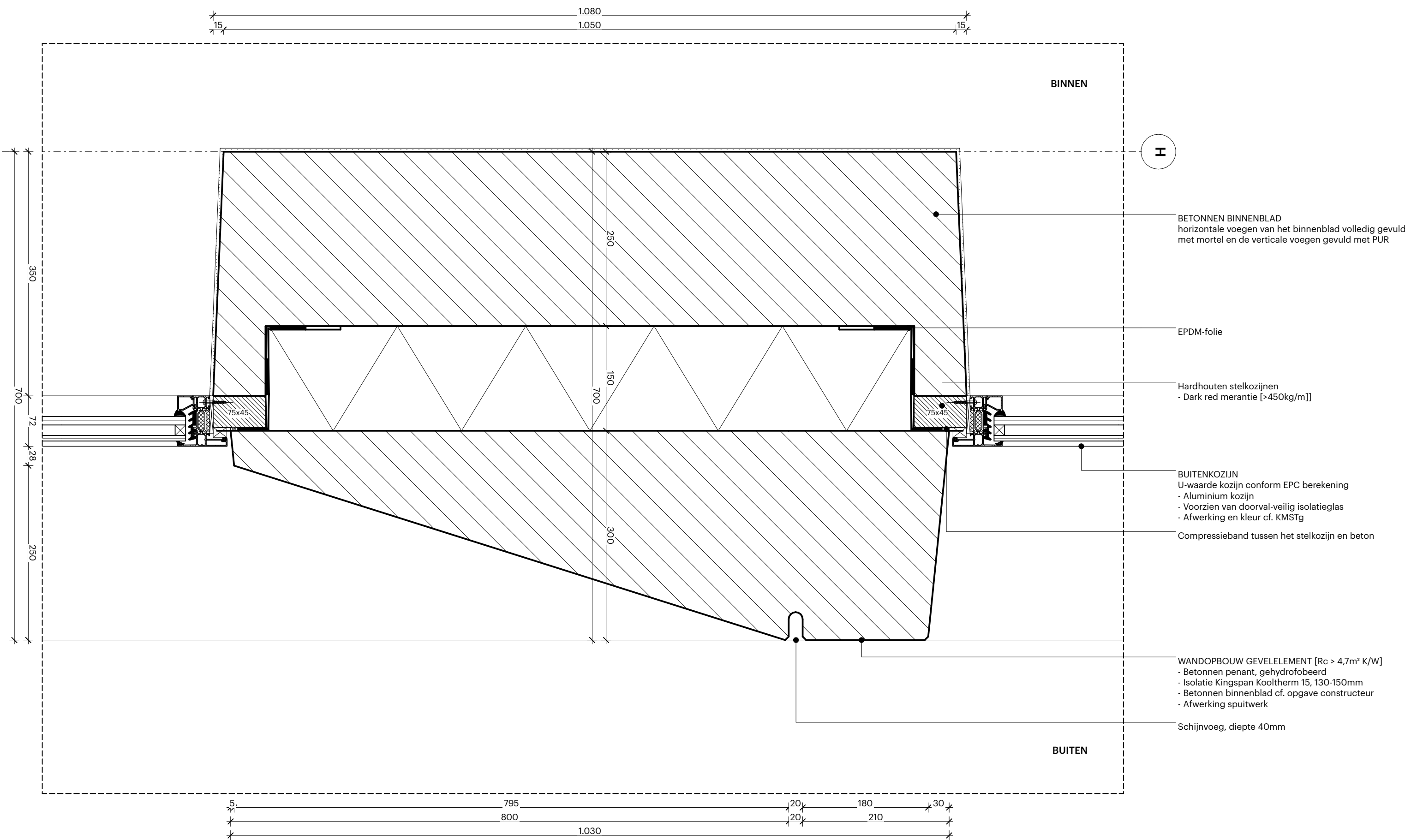


FACADES
Gevelfragment



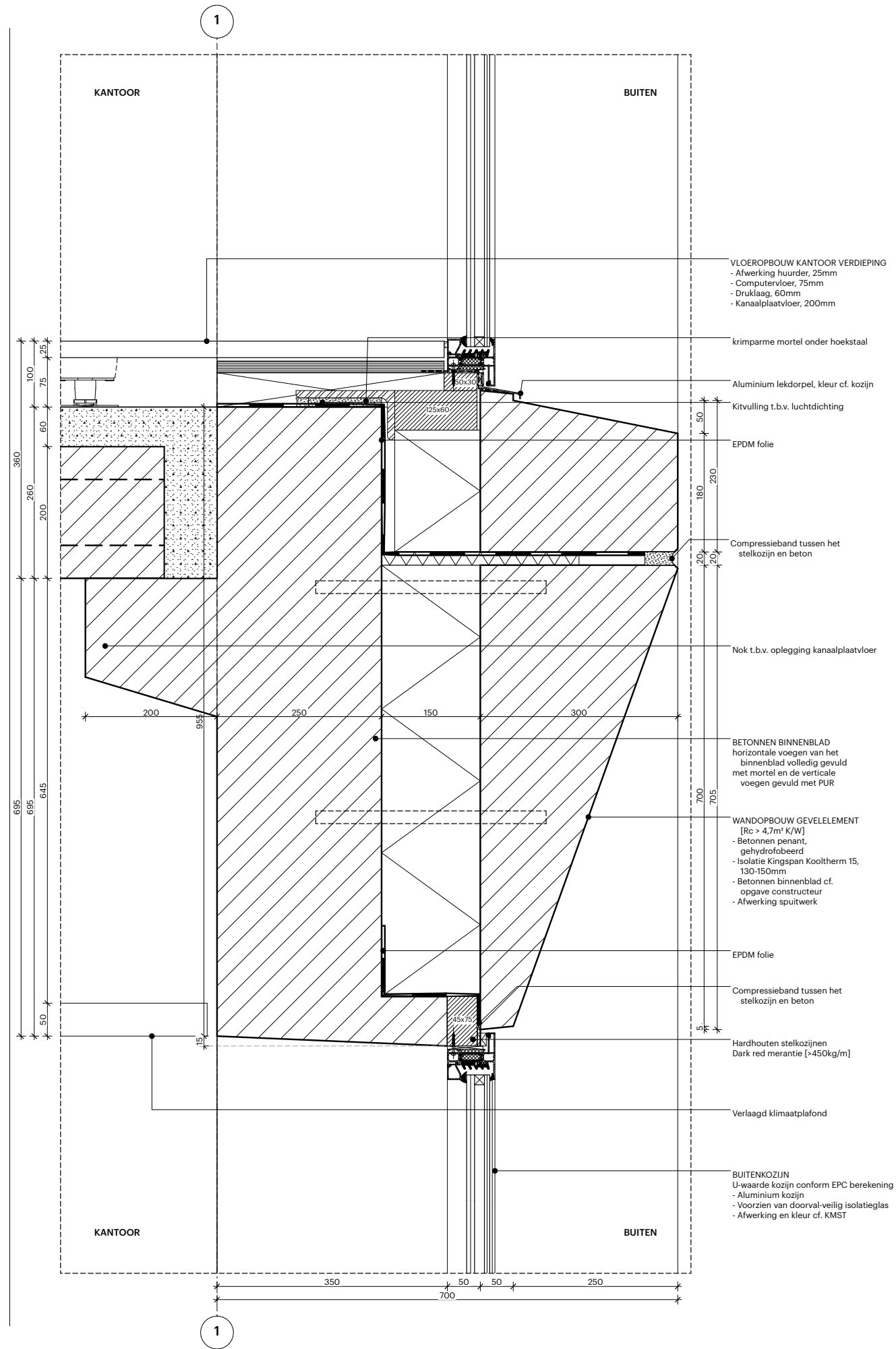
FACADES

Detailling horizontaal



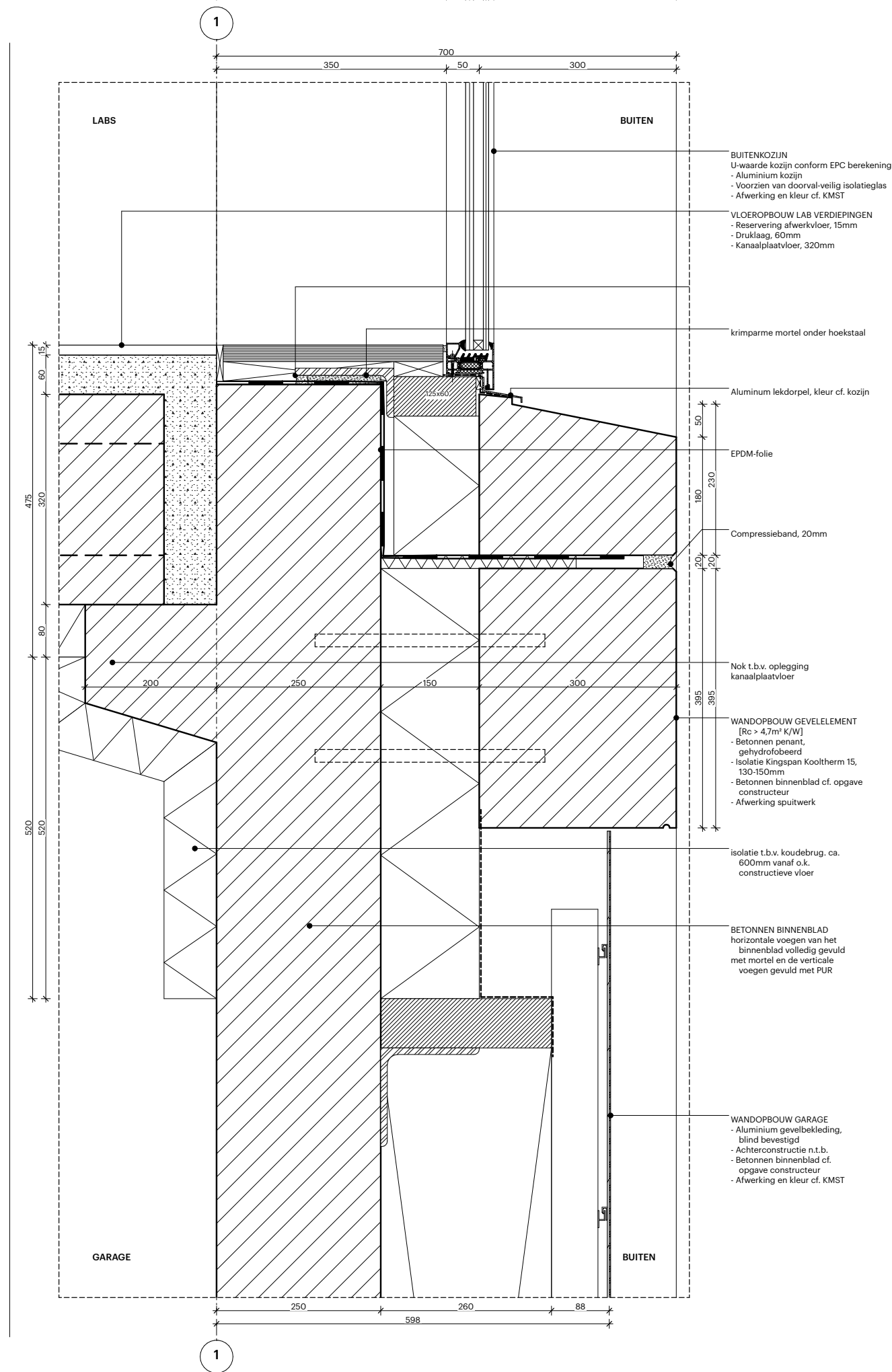
FACADES

Detaillering verticaal verdieping

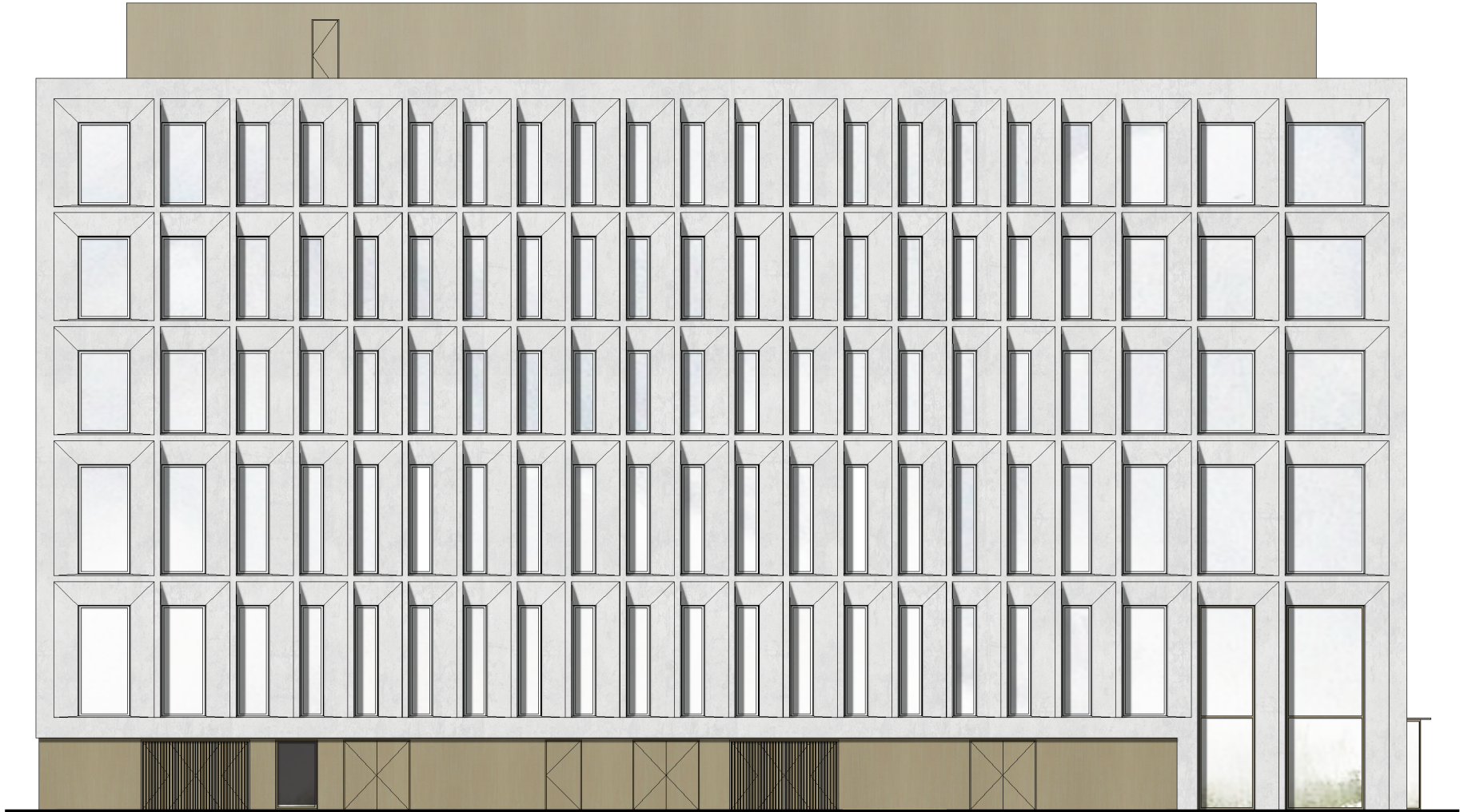


FACADES

Detailering verticaal plint



FACADES
Oostgevel



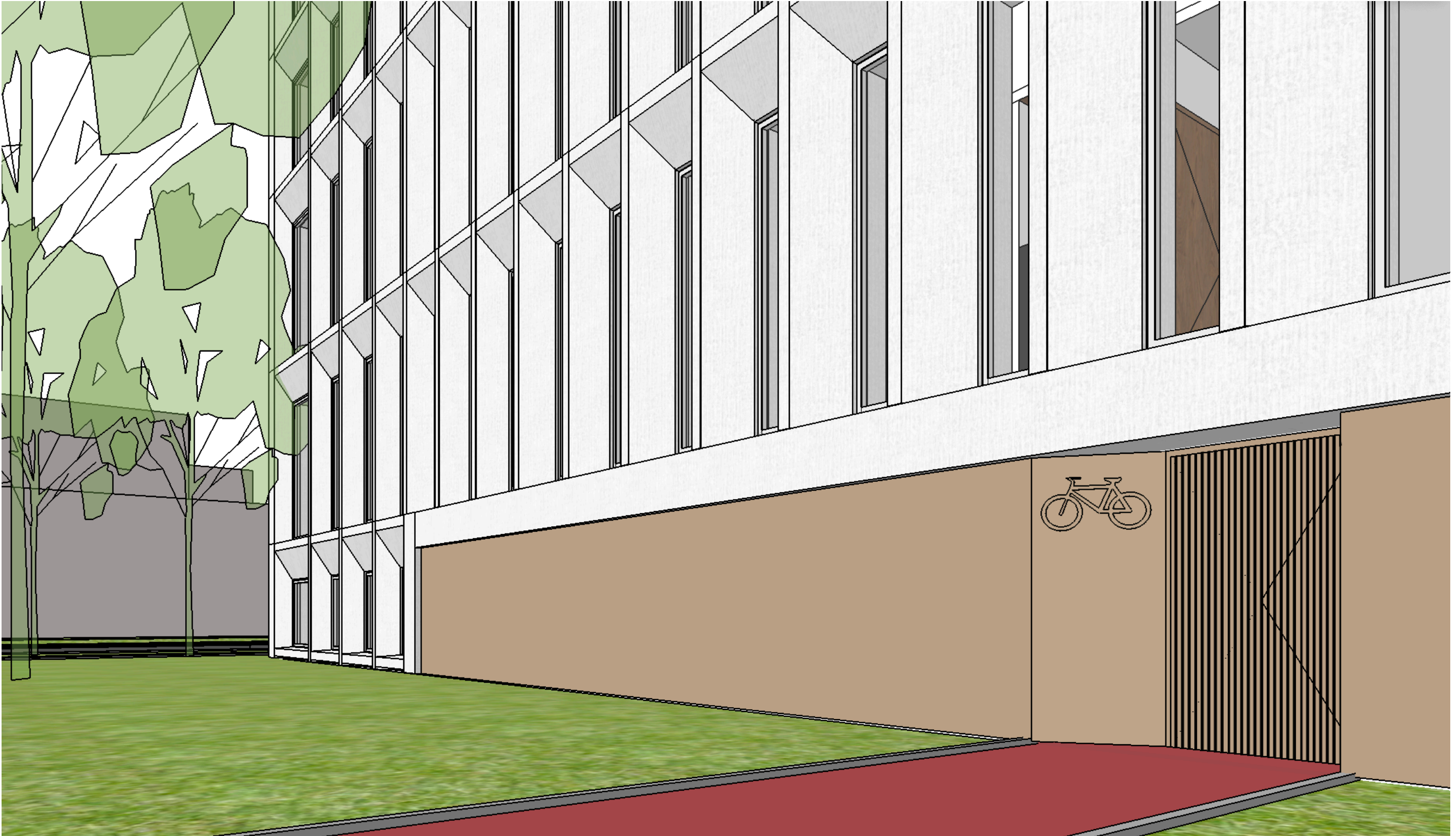


FACADES
Westgevel



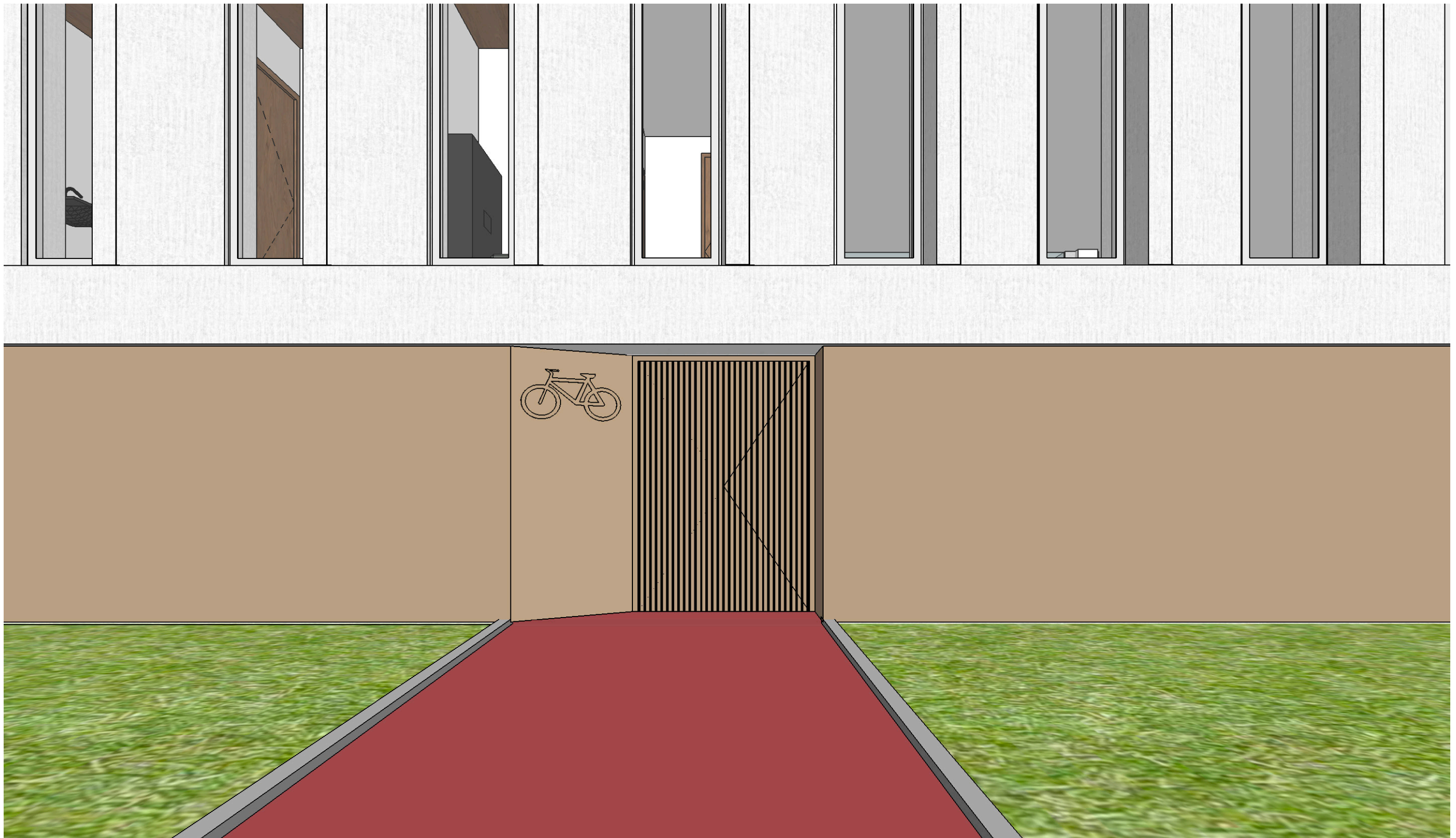
FACADES

Westgevel - fietsentree



FACADES

Westgevel - fietsentree







04 ECOLOGIE

Bureau Stadsnatuur



Figuur 2. Links: nestkast Zwarte roodstaart. Rechts: nestkast Torenvalk



Figuur 1. Referentie van Optigrün natuurdaksysteem met inheemse flora (foto: Optigrün).



Figuur 3 Links: broedende scholekster op grinddak. Rechts: vleermuizenpaal.



Figuur 4. Insectenhotels; simpele structuren die voortplantingsplaatsen bieden aan o.a. wilde bijen.



Figuur 5. Halfopen verharding.

ECOLOGIE

Ground floor - entrance



Half-open verharding

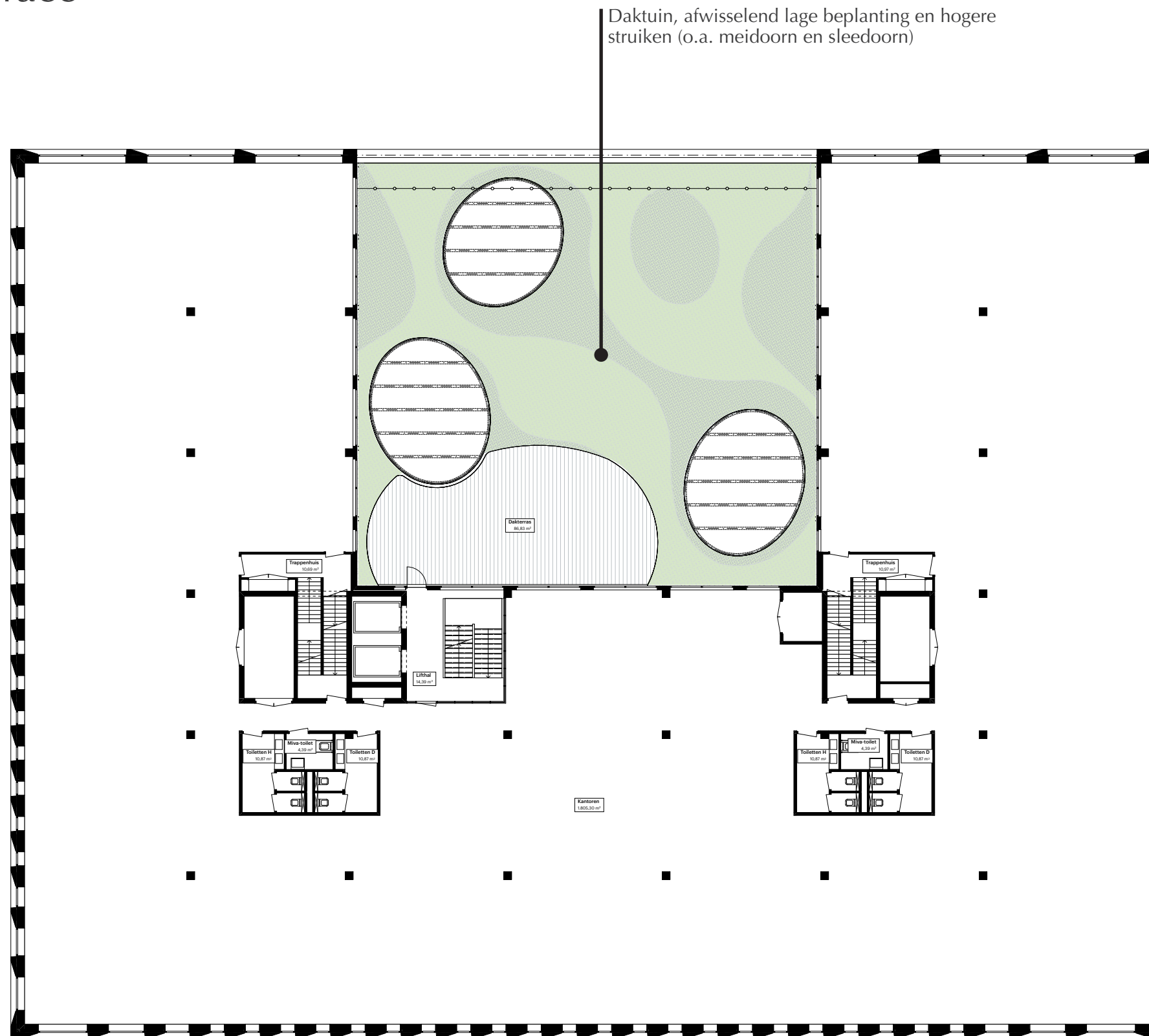


Vleermuizenpaal op erfgrans



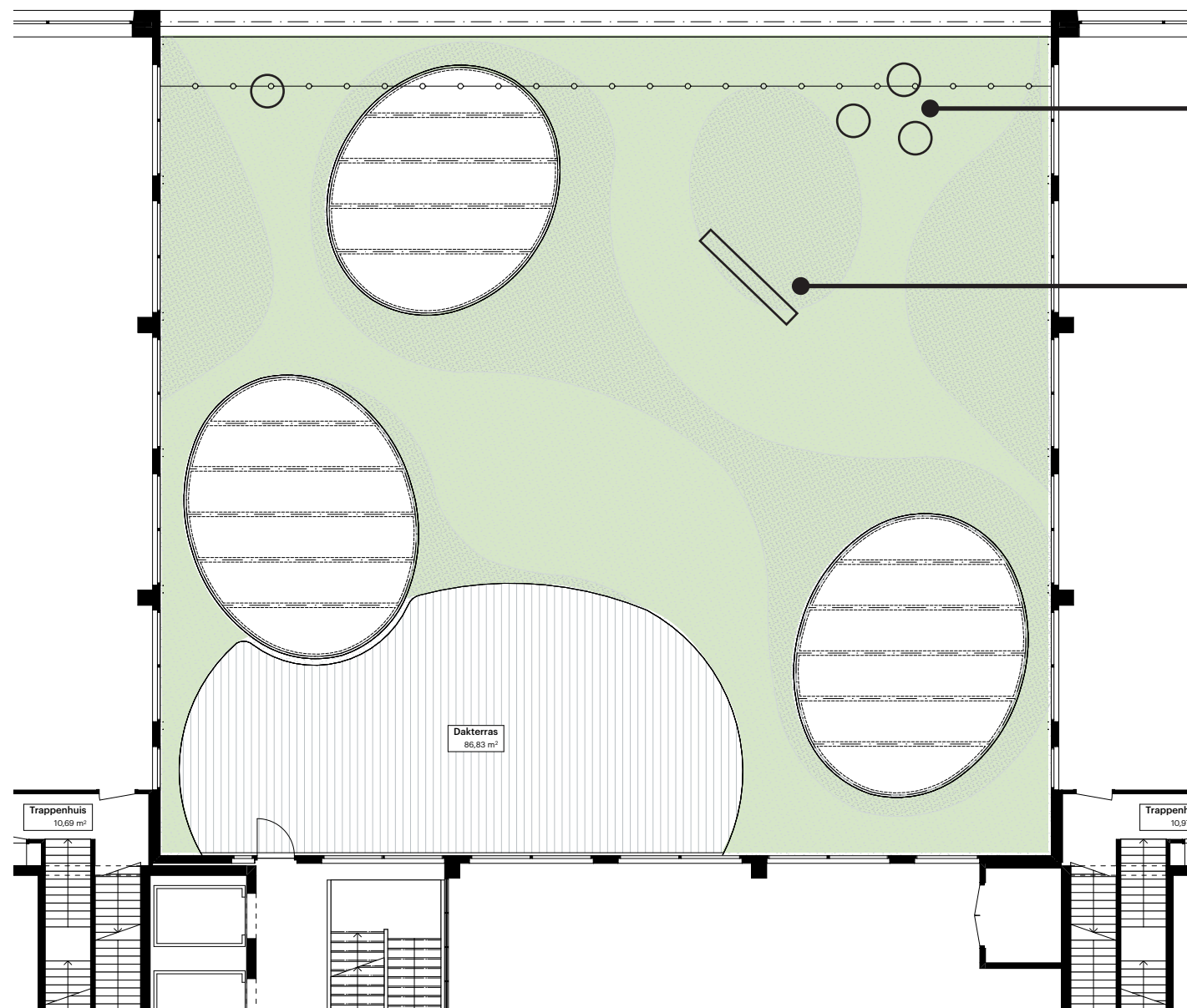
ECOLOGIE

3rd floor - atrium terrace

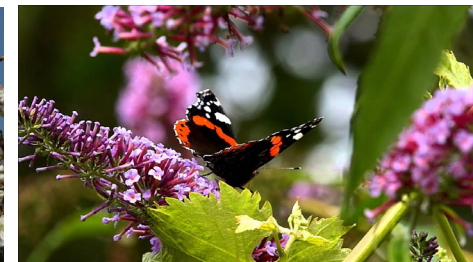
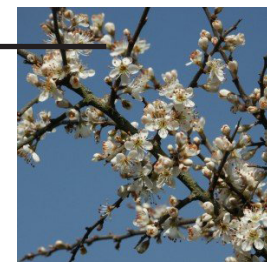


ECOLOGIE

3rd floor - atrium terrace



Nestkasten voor koolmees, pimpelmees, zwarte roodstaart aan de gevelzijde in de daktuin. Insectenhotel aan randen hogere beplanting



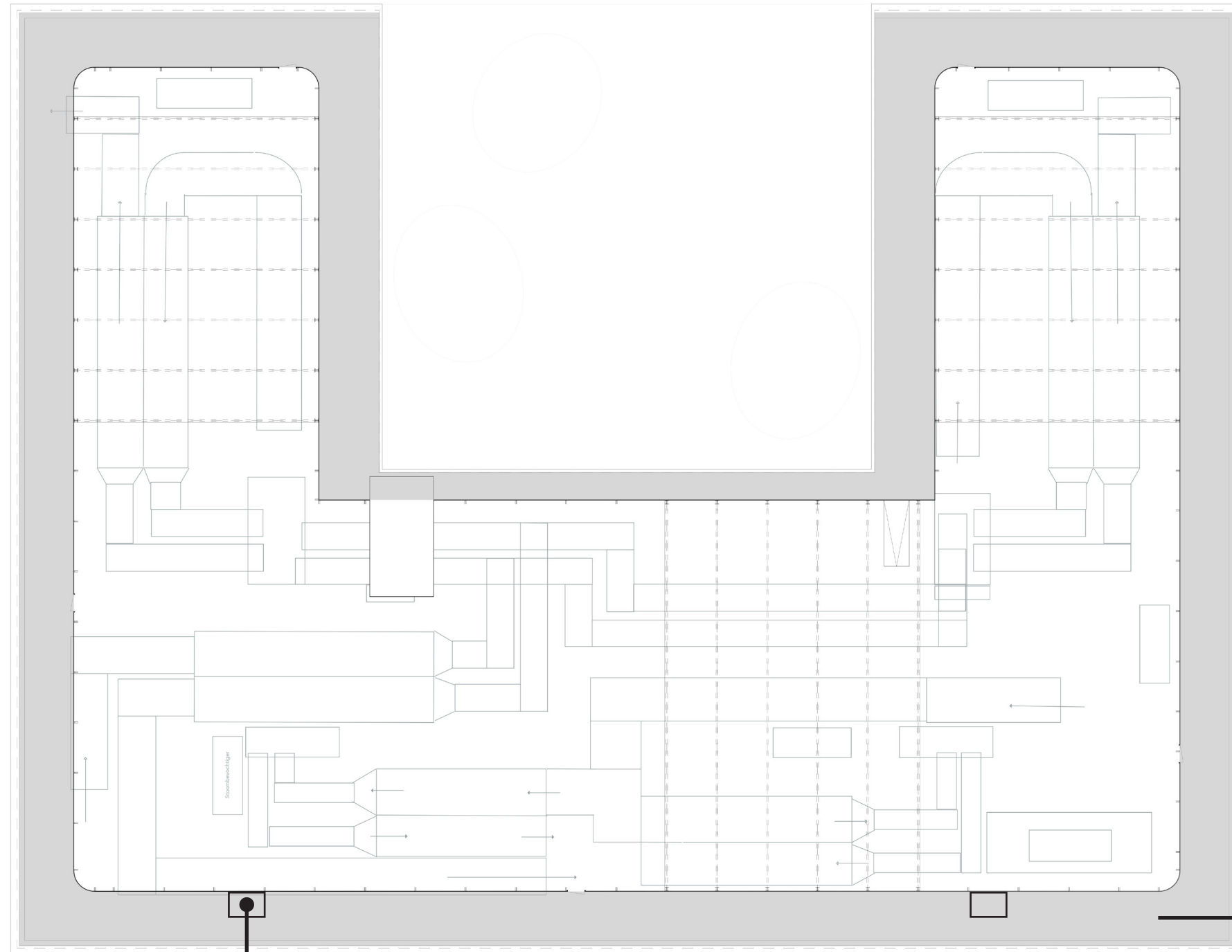
zone's voor hogere beplanting



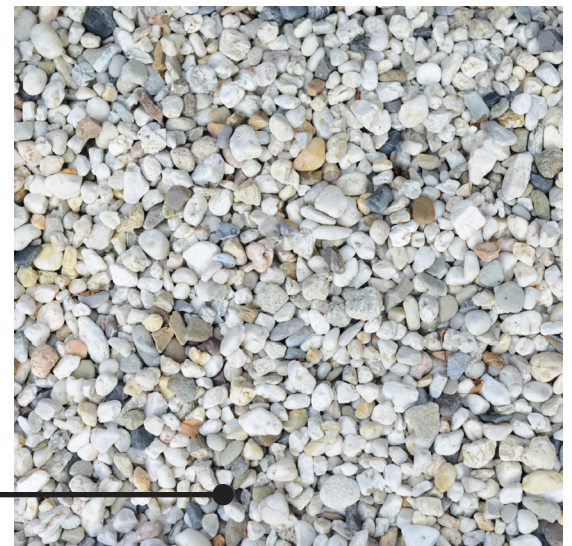
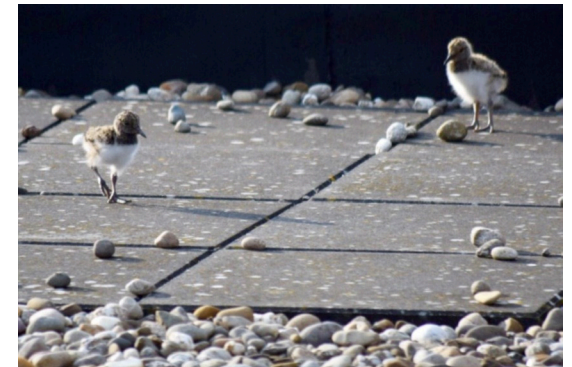
Daktuin, afwisselend lage beplanting en hogere struiken (o.a. meidoorn en sleedoorn)

ECOLOGIE

roof



Nestkast torenvalk



grind langs dakrand t.b.v. broedvoorziening
scholekster

