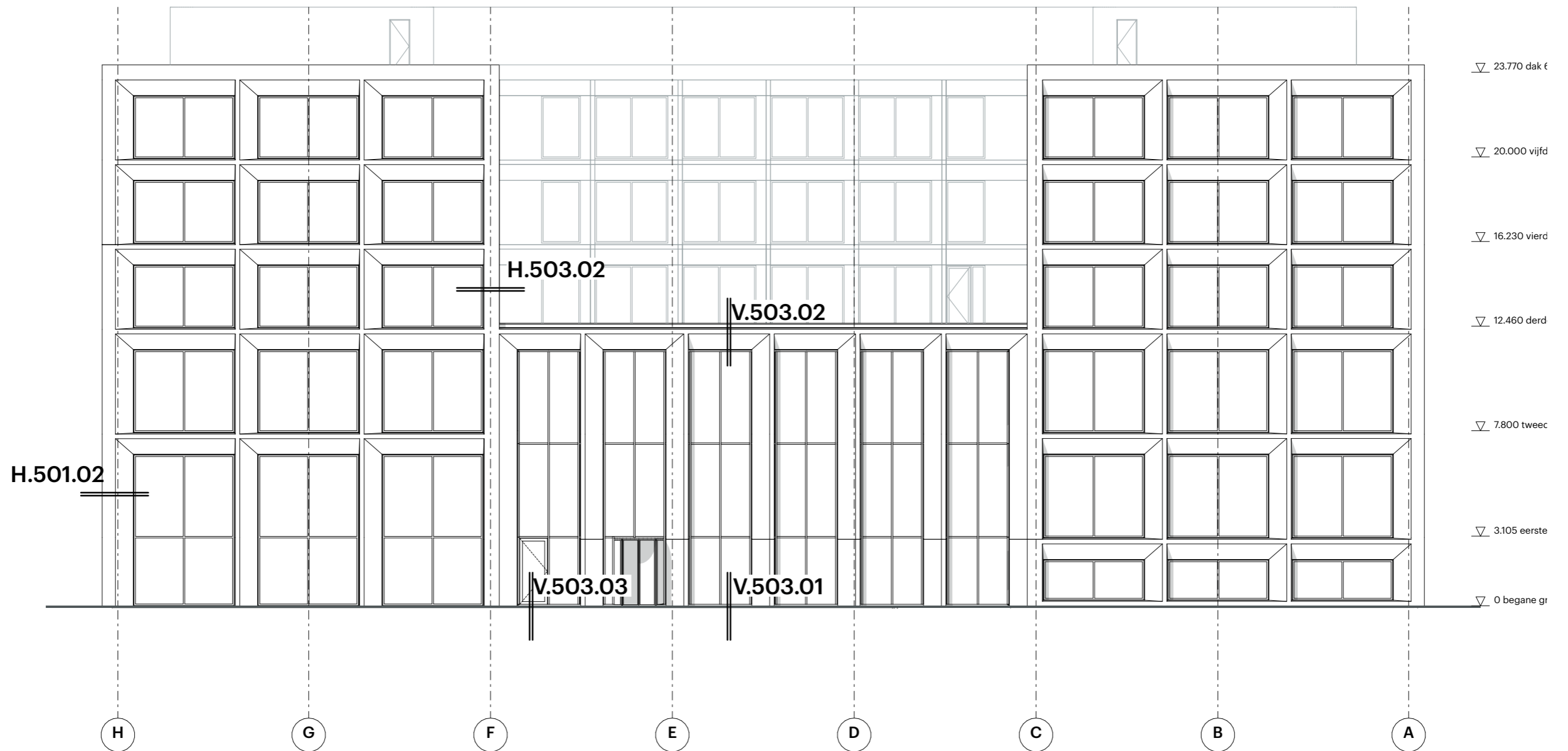
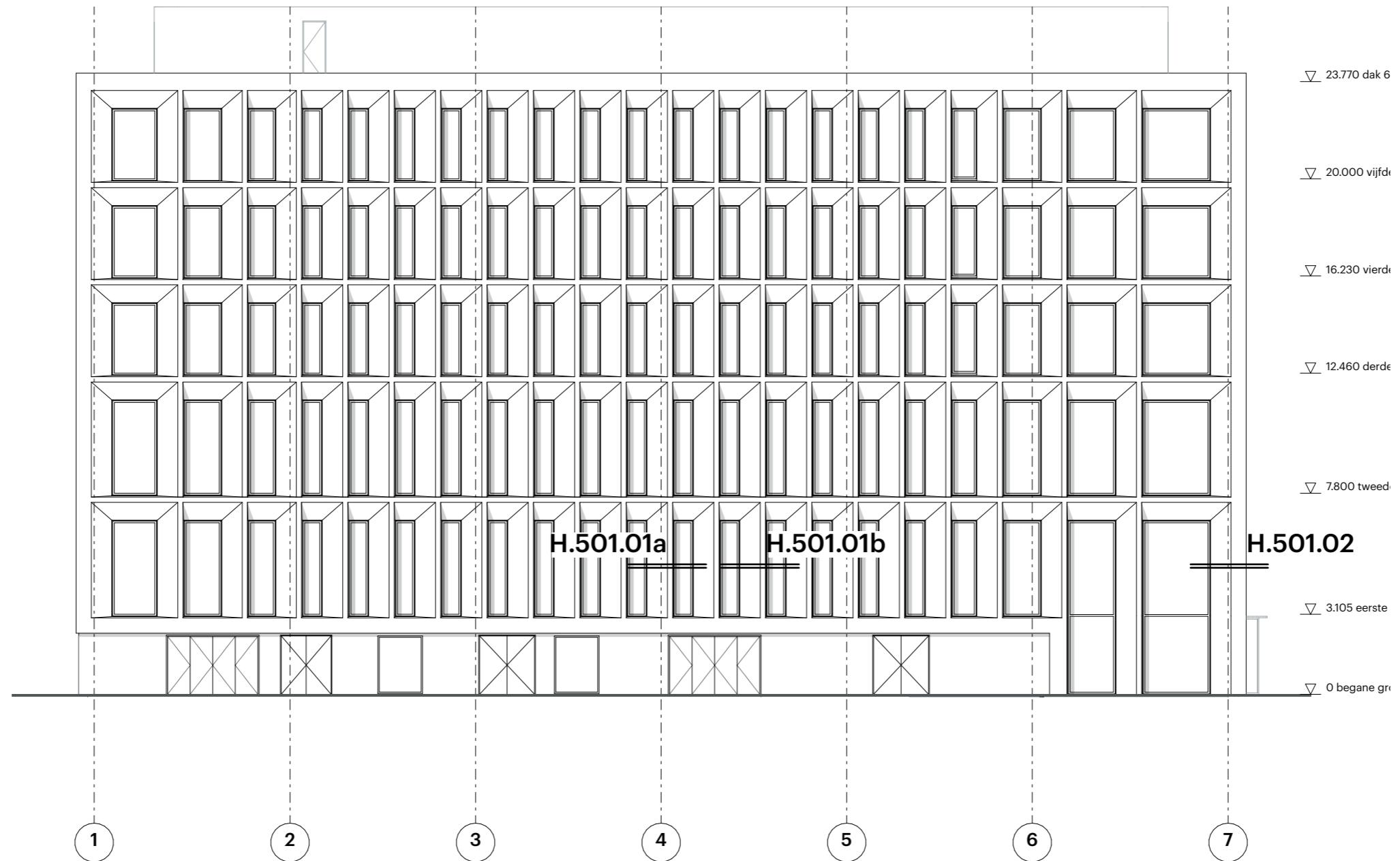
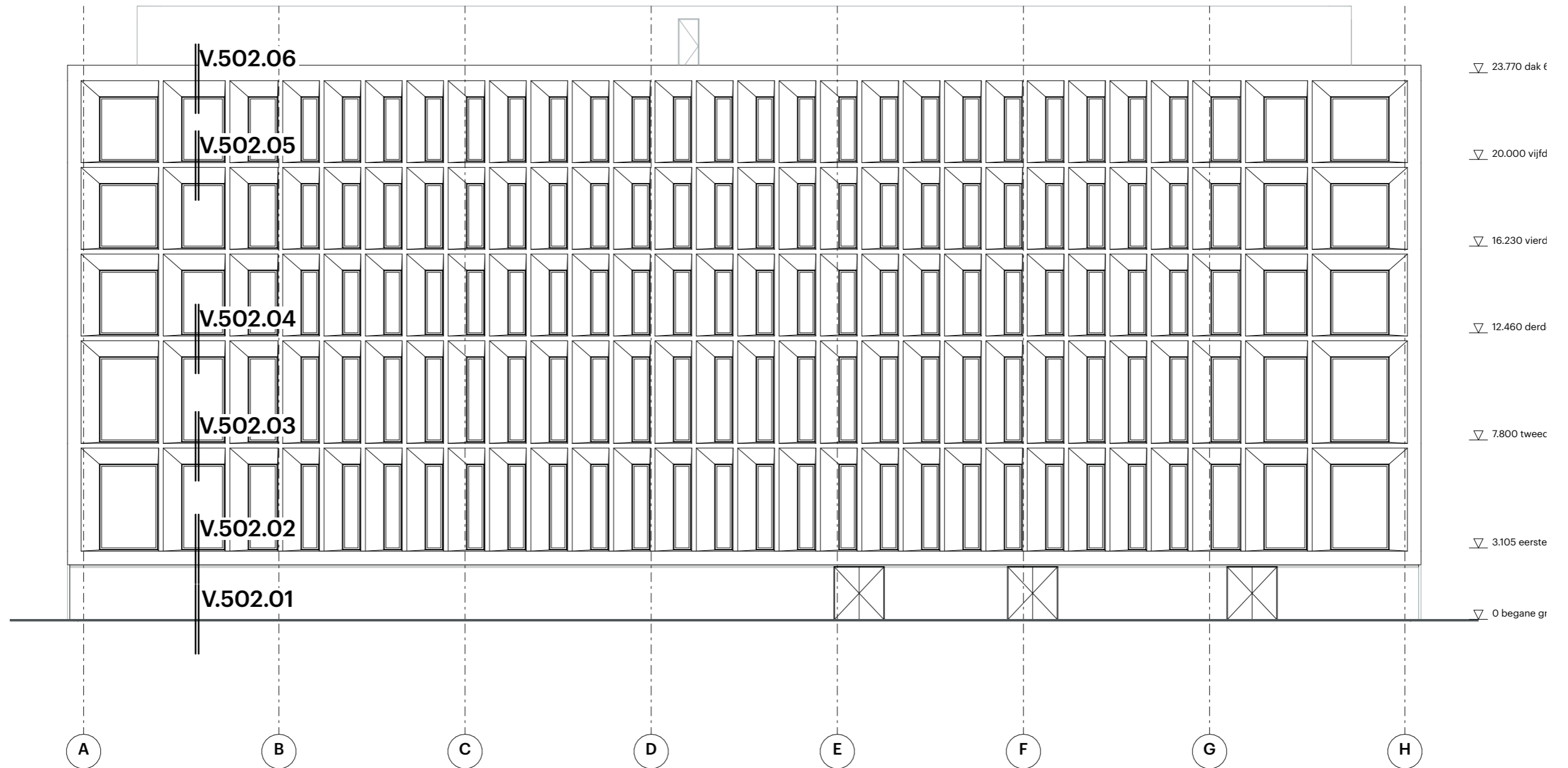


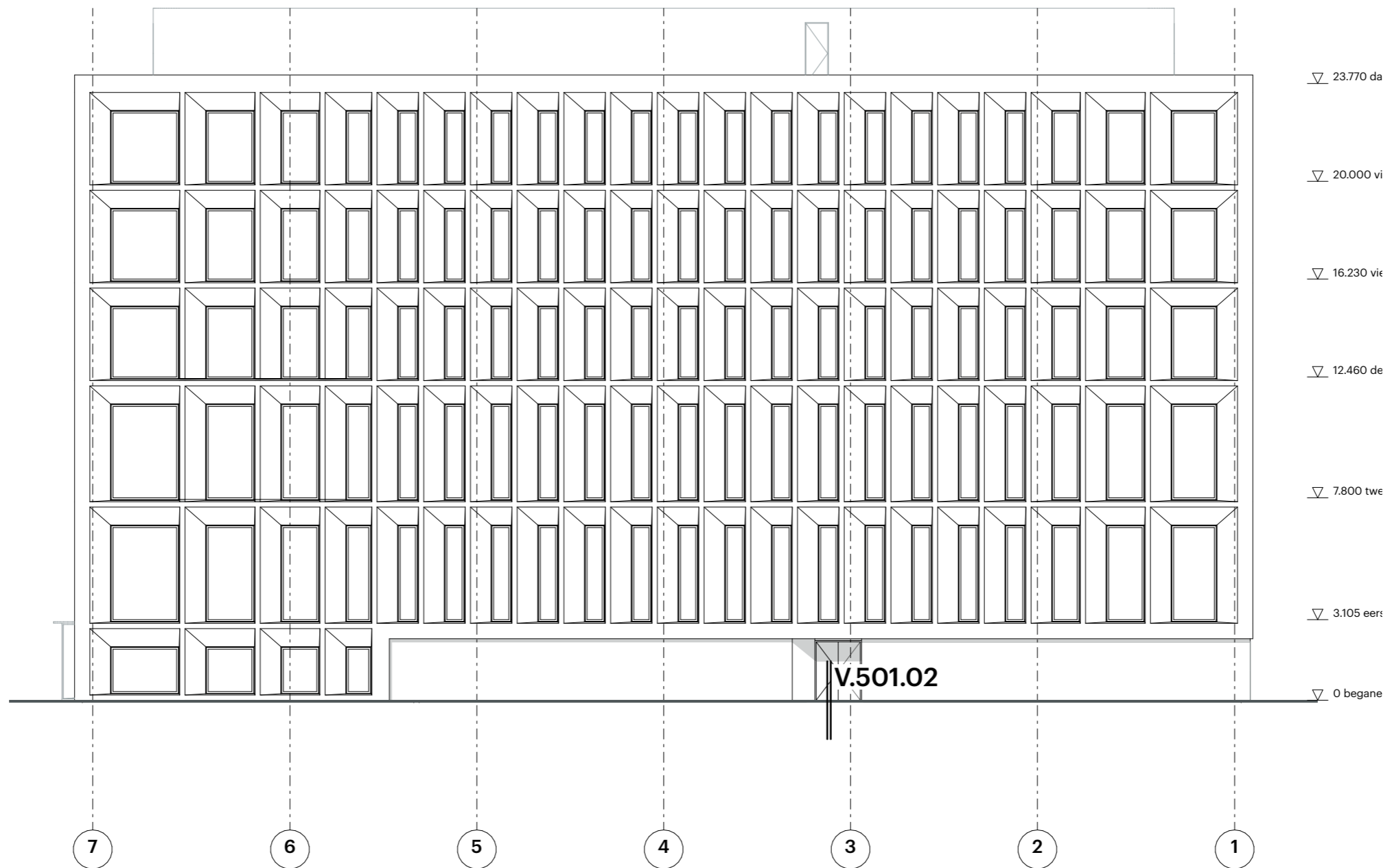
POWERHOUSE

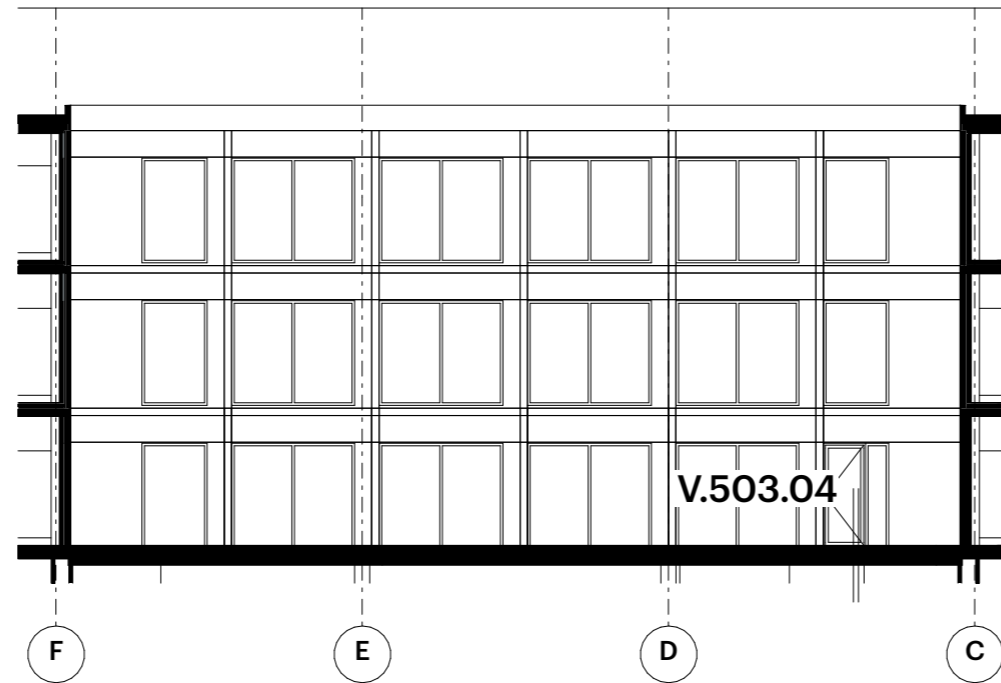
OV.0500





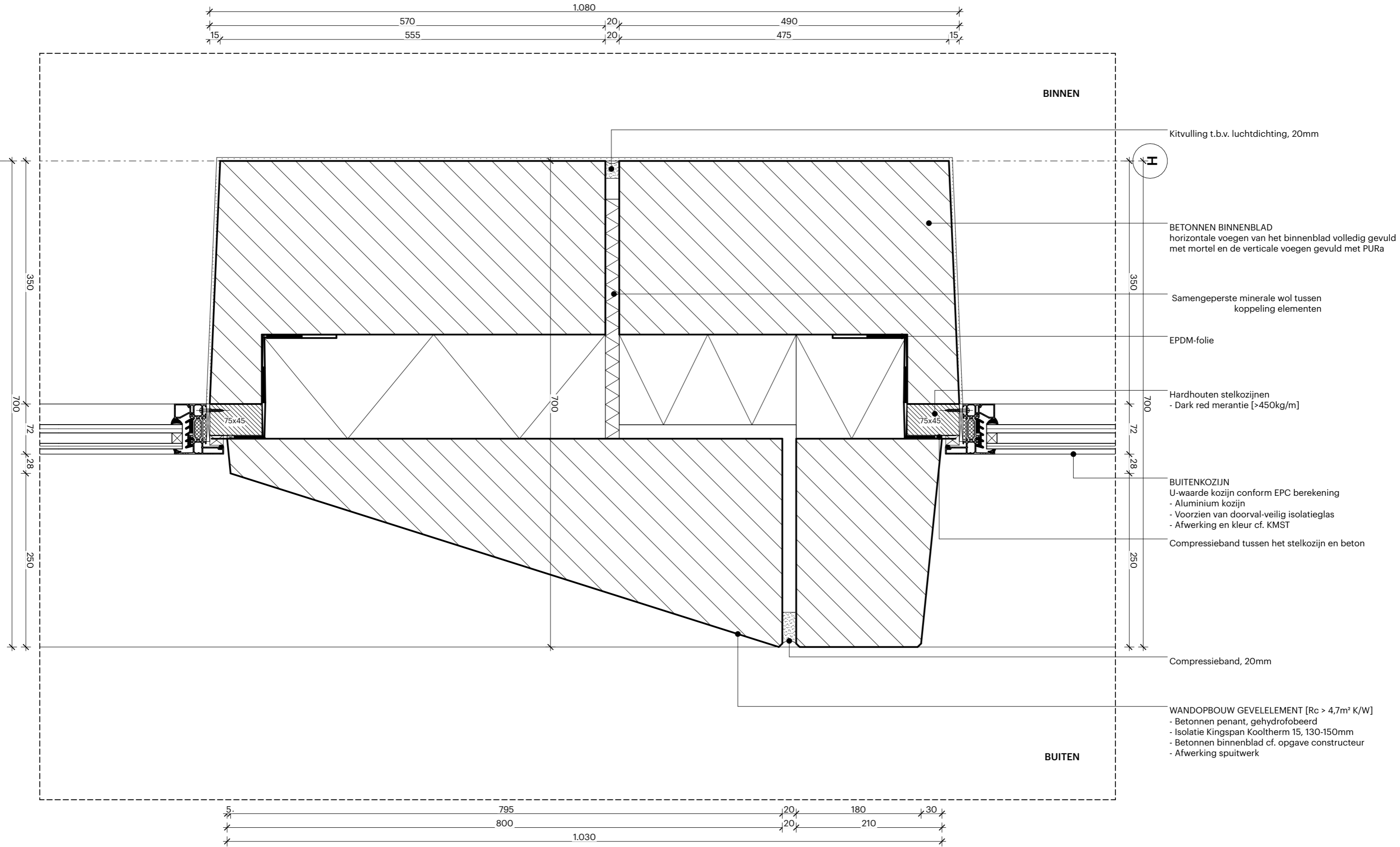


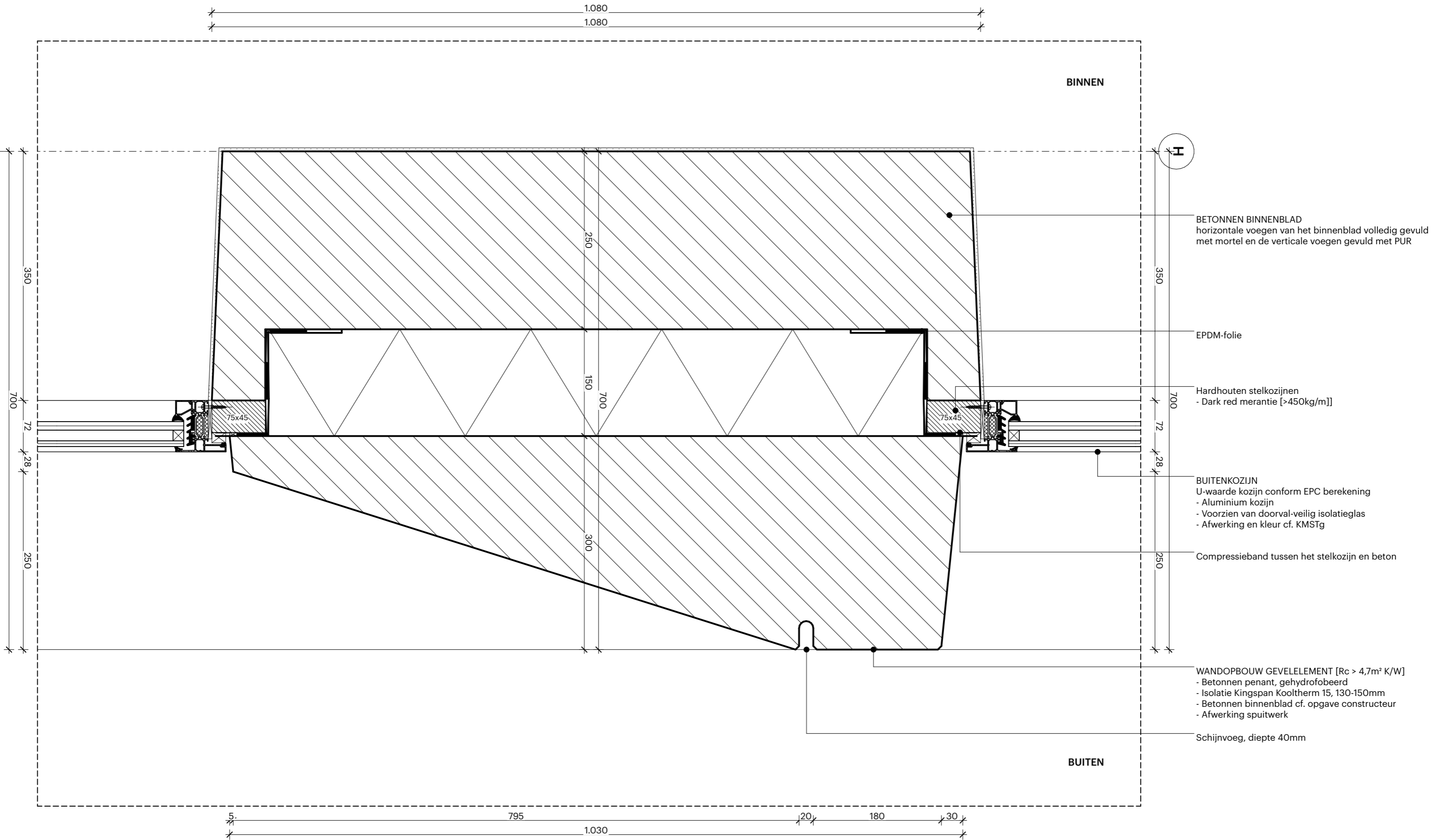


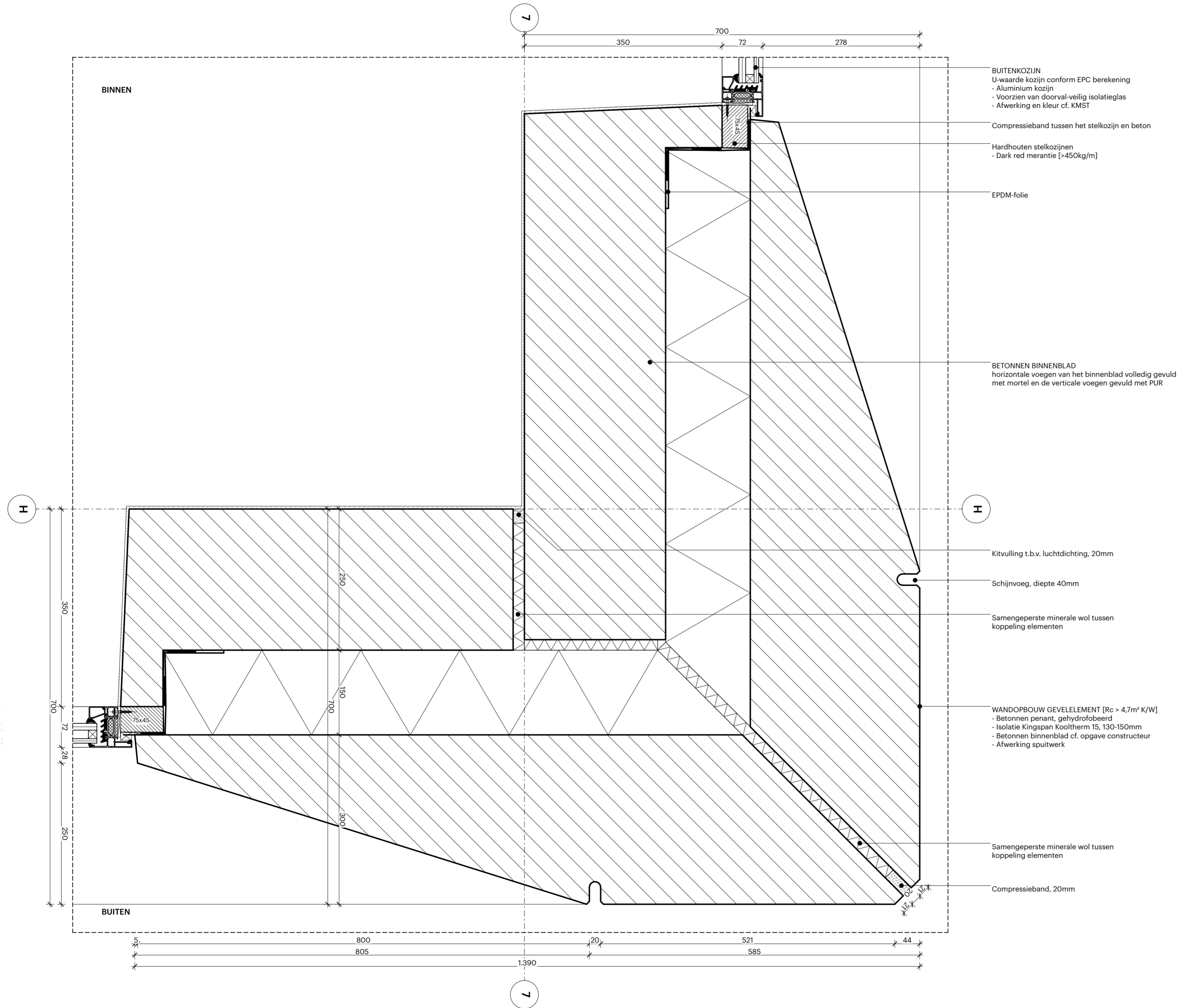


POWERHOUSE

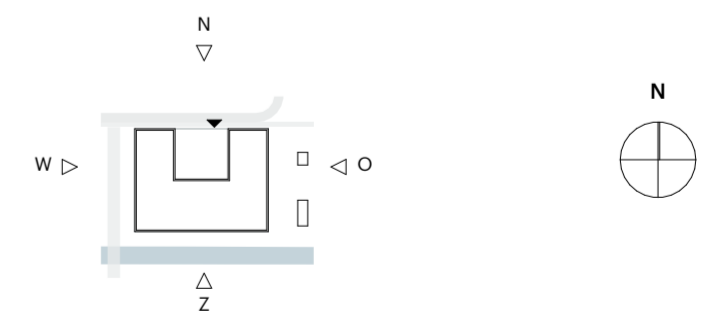
OV.0500.H







POWERHOUSE



Project
 1910 Janssen Bioscience Leiden

Opdrachtgever
 RED COMPANY

Fase
 Omgevingsvergunning

Status
 DEFINITIEF

Formaat

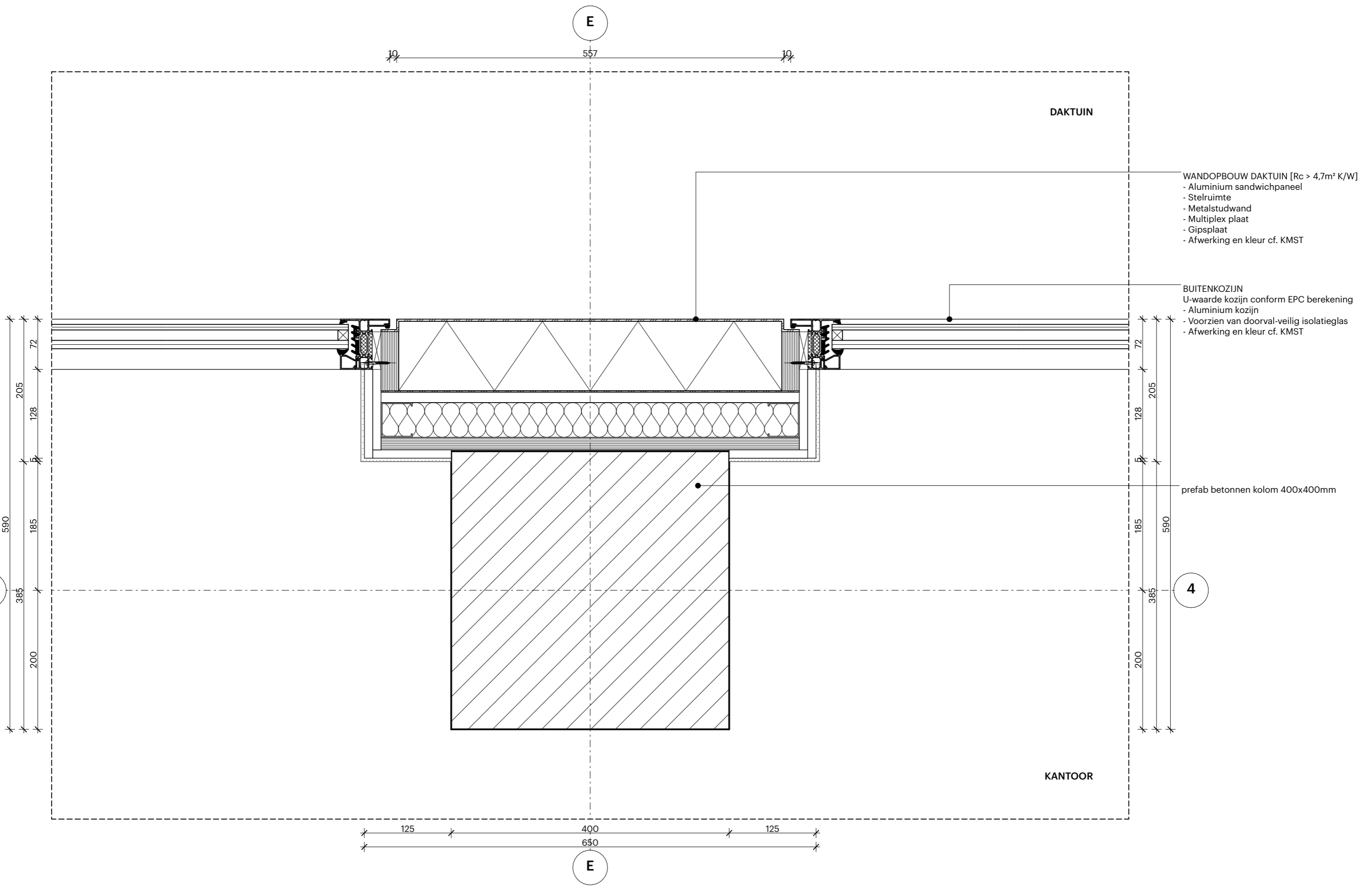
Schaal
 1:5

Datum
 23-04-2021

Revisie Datum

Onderwerp
 Gevelement - hoek a

H.501.02



WANDOPBOUW DAKTUIN [$R_c > 4,7m^2 K/W$]

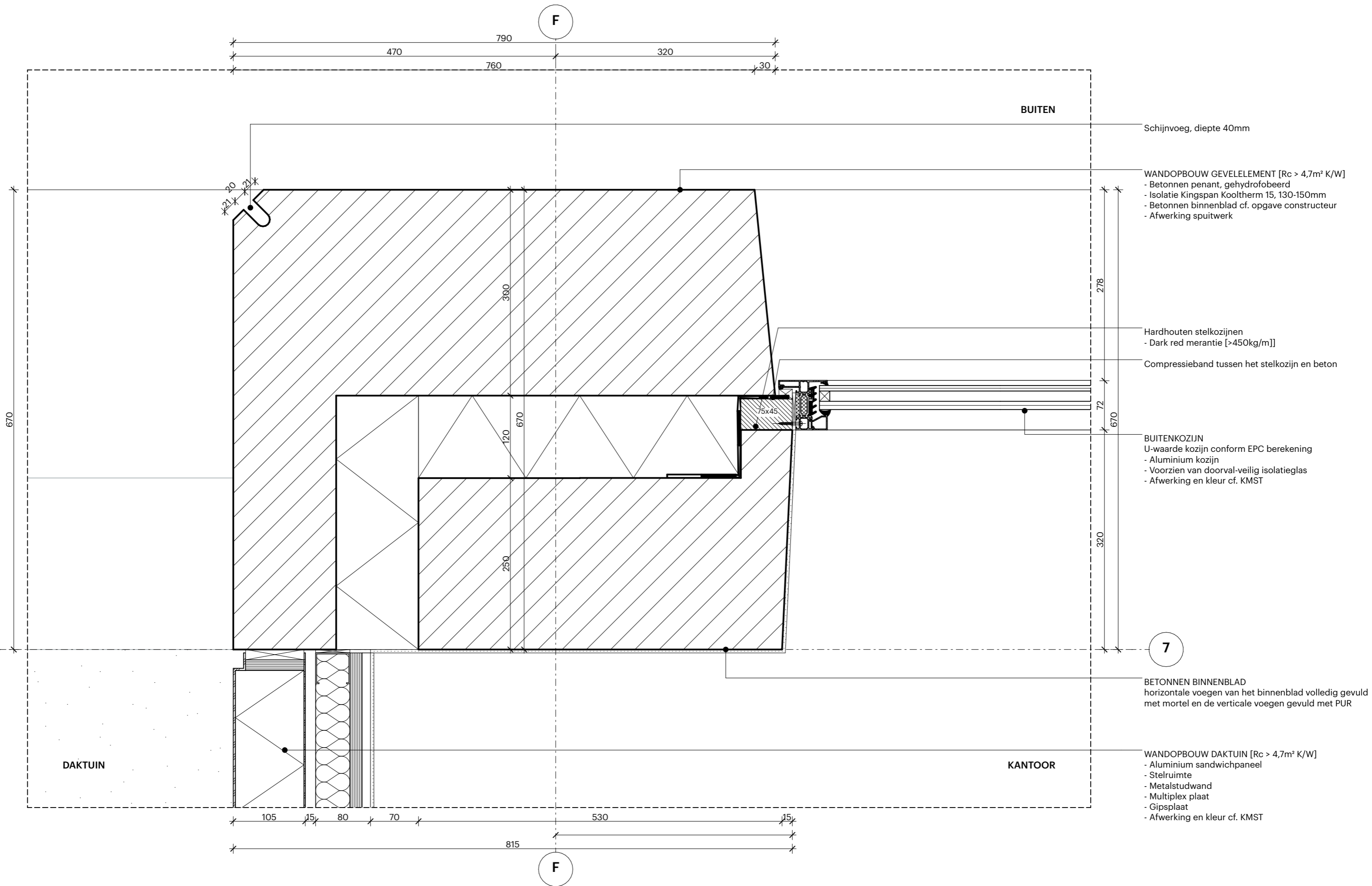
- Aluminium sandwichpaneel
- Stelruimte
- Metalstudwand
- Multiplex plaat
- Gipsplaat
- Afwerking en kleur cf. KMST

BUITENKOZIJN

U-waarde kozijn conform EPC berekening

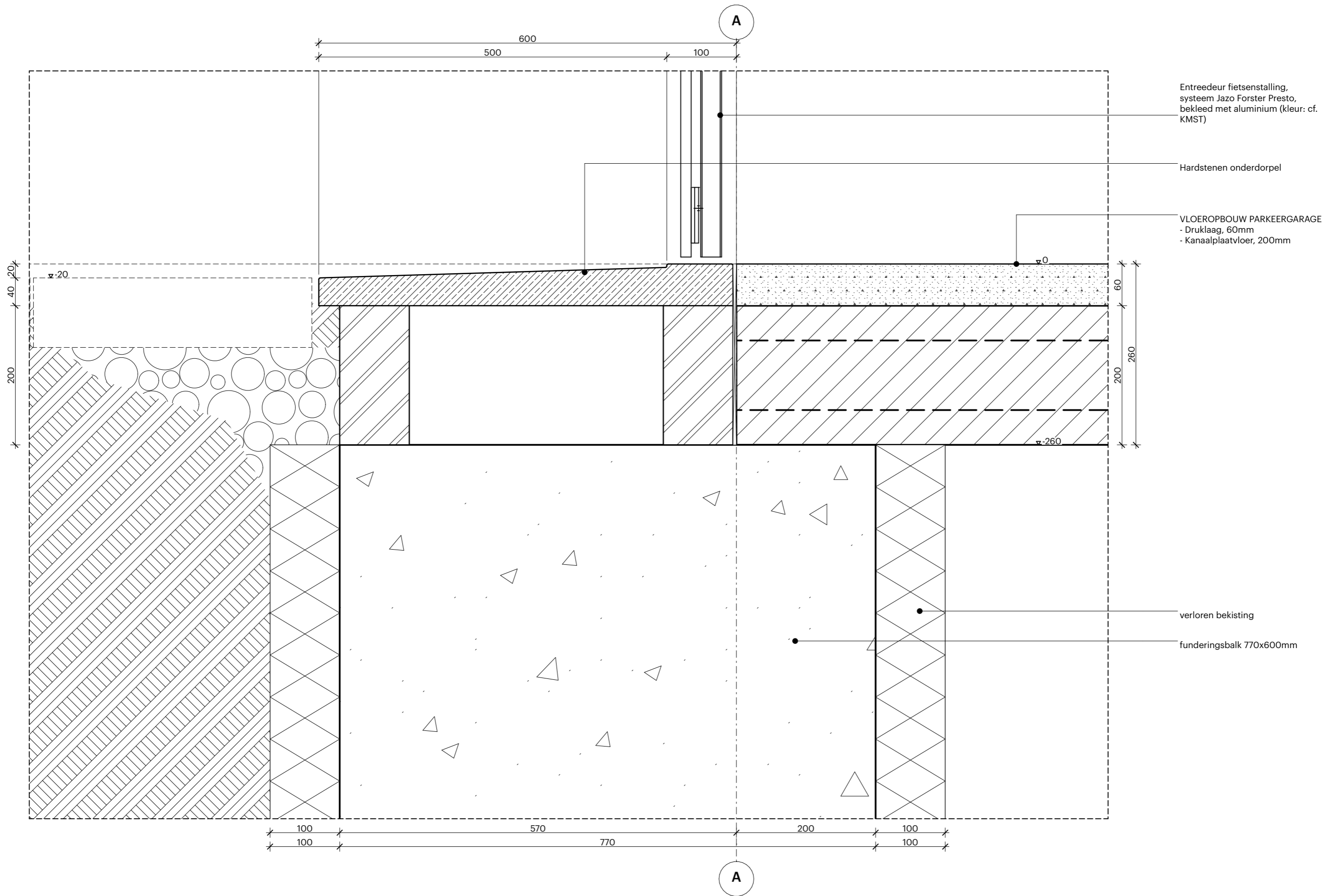
- Aluminium kozijn
- Voorzien van doorval-veilig isolatieglas
- Afwerking en kleur cf. KMST

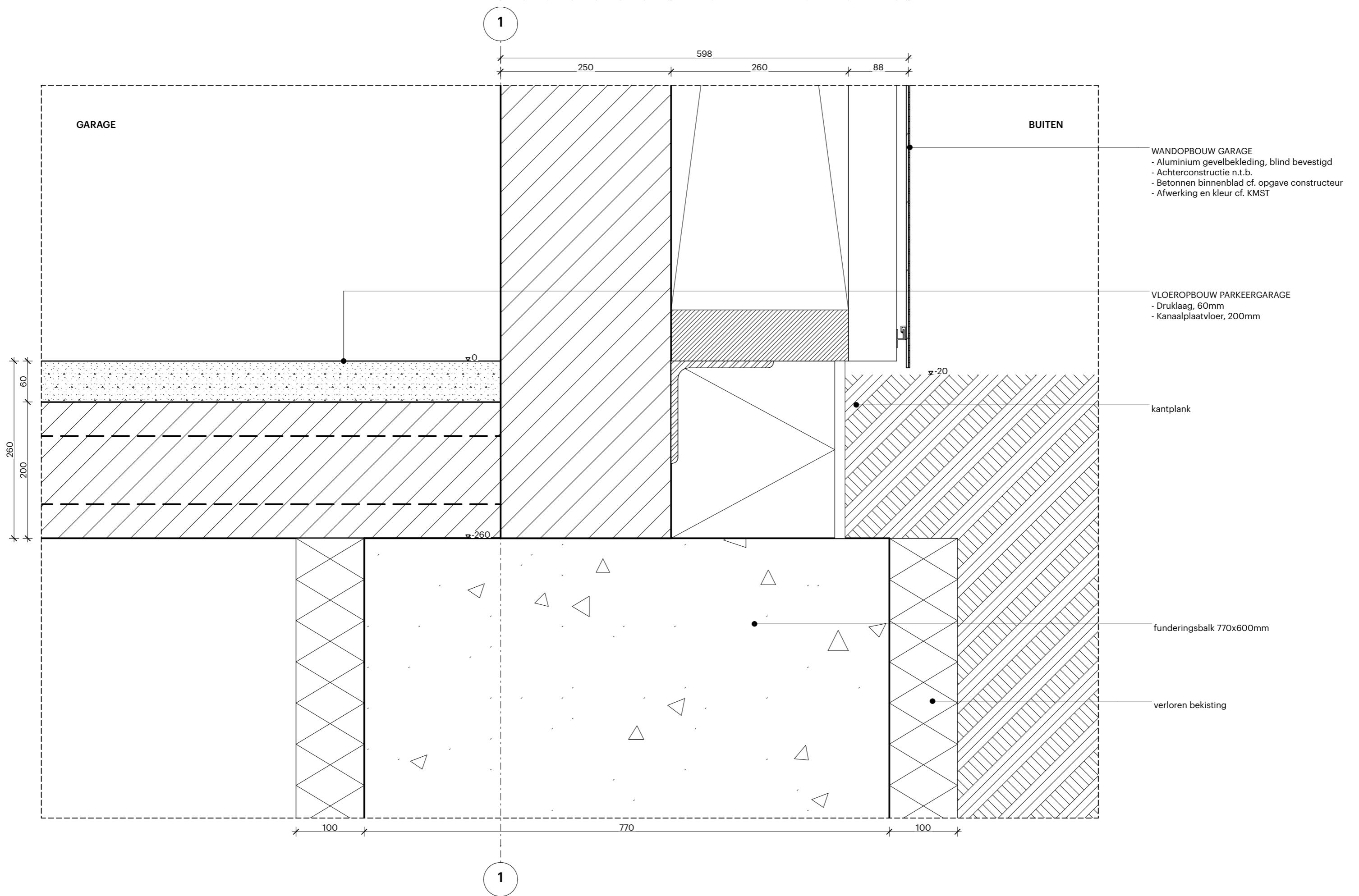
prefab betonnen kolom 400x400mm



POWERHOUSE

OV.0500.V





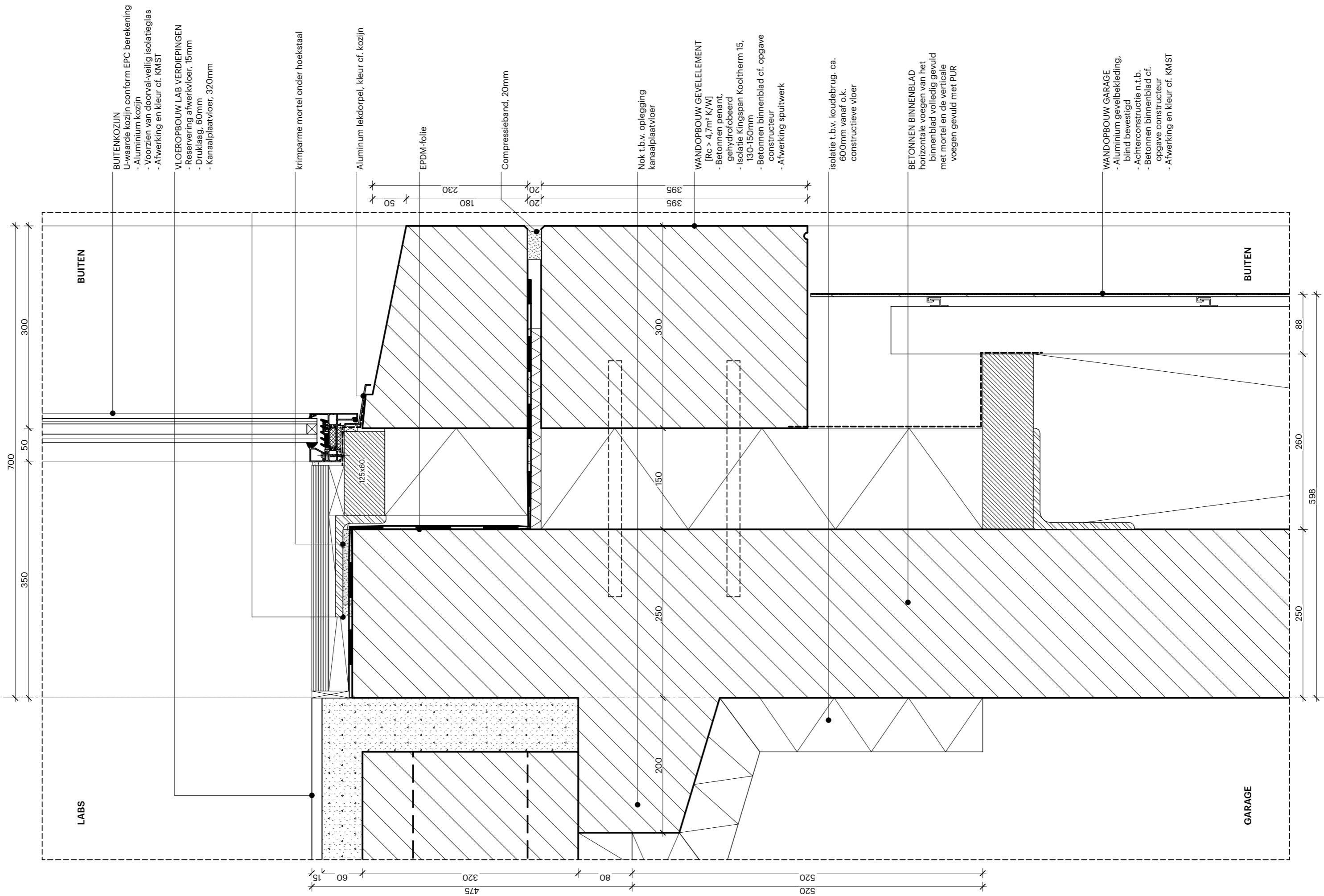
WANDOPBOUW GARAGE
 - Aluminium gevelbekleding, blind bevestigd
 - Achterconstructie n.t.b.
 - Betonnen binnenblad cf. opgave constructeur
 - Afwerking en kleur cf. KMST

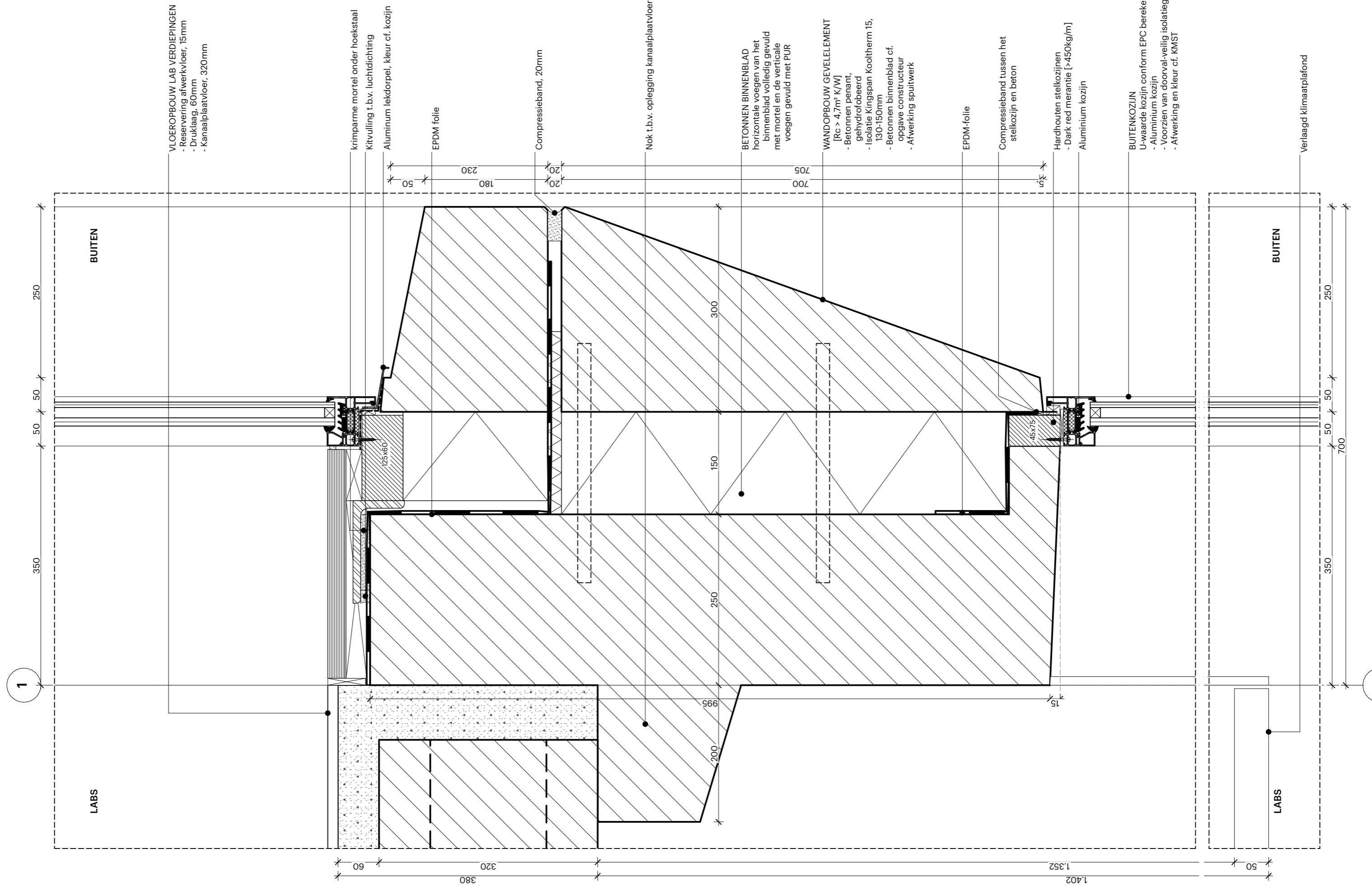
VLOEROPBOUW PARKEERGARAGE
 - Druklaag, 60mm
 - Kanaalplaatvloer, 200mm

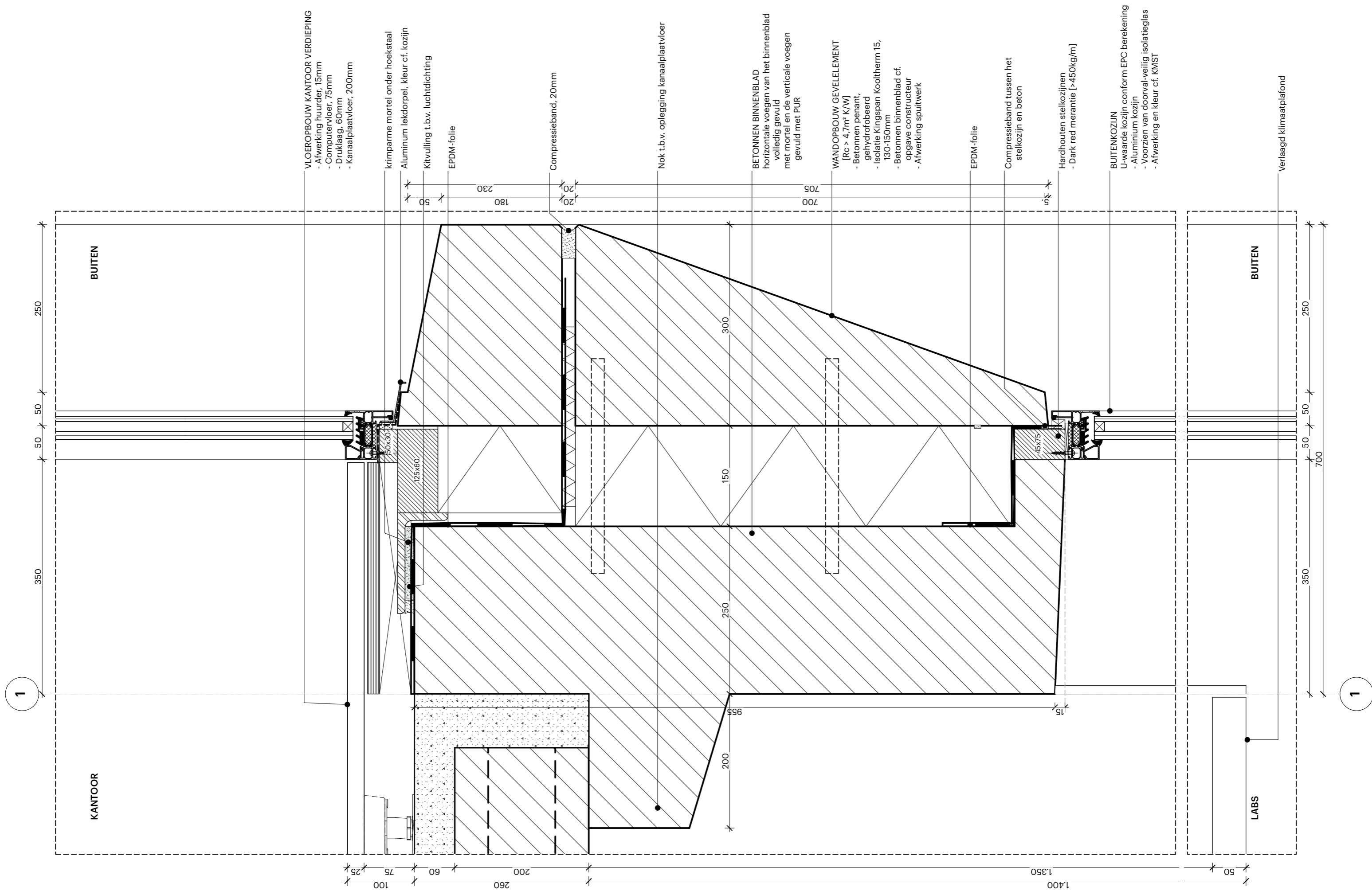
kantplank

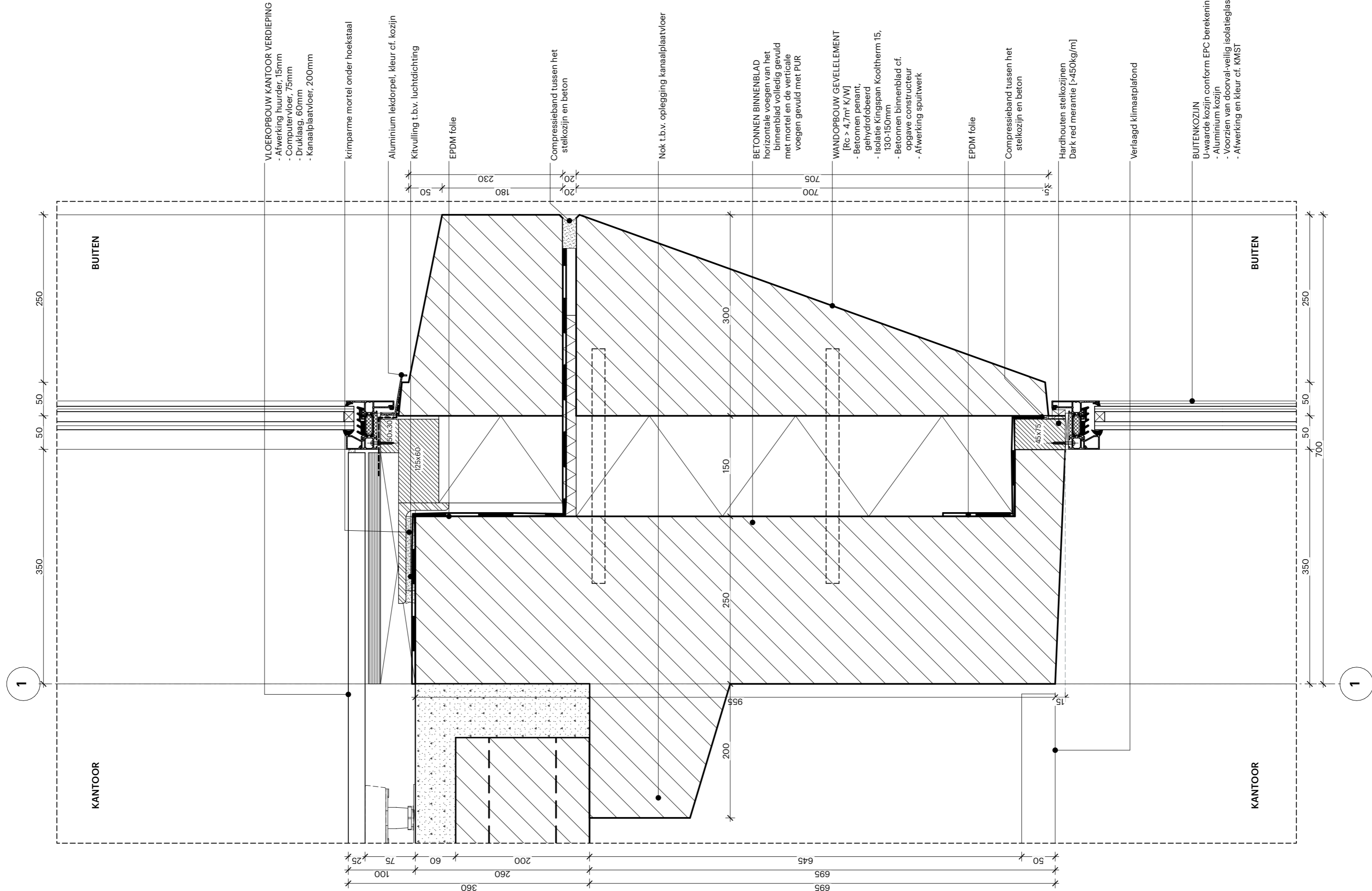
funderingsbalk 770x600mm

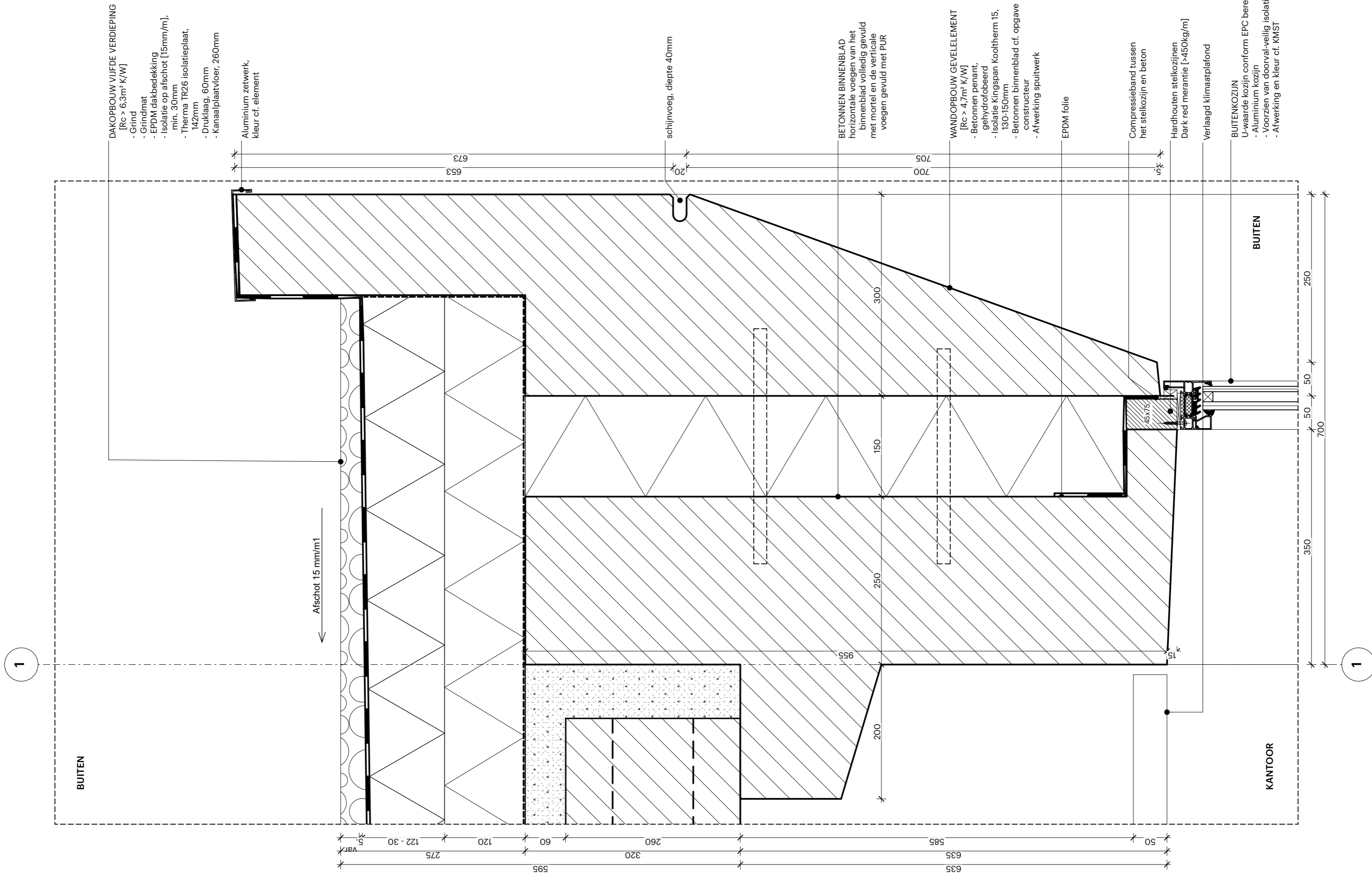
verloren bekisting

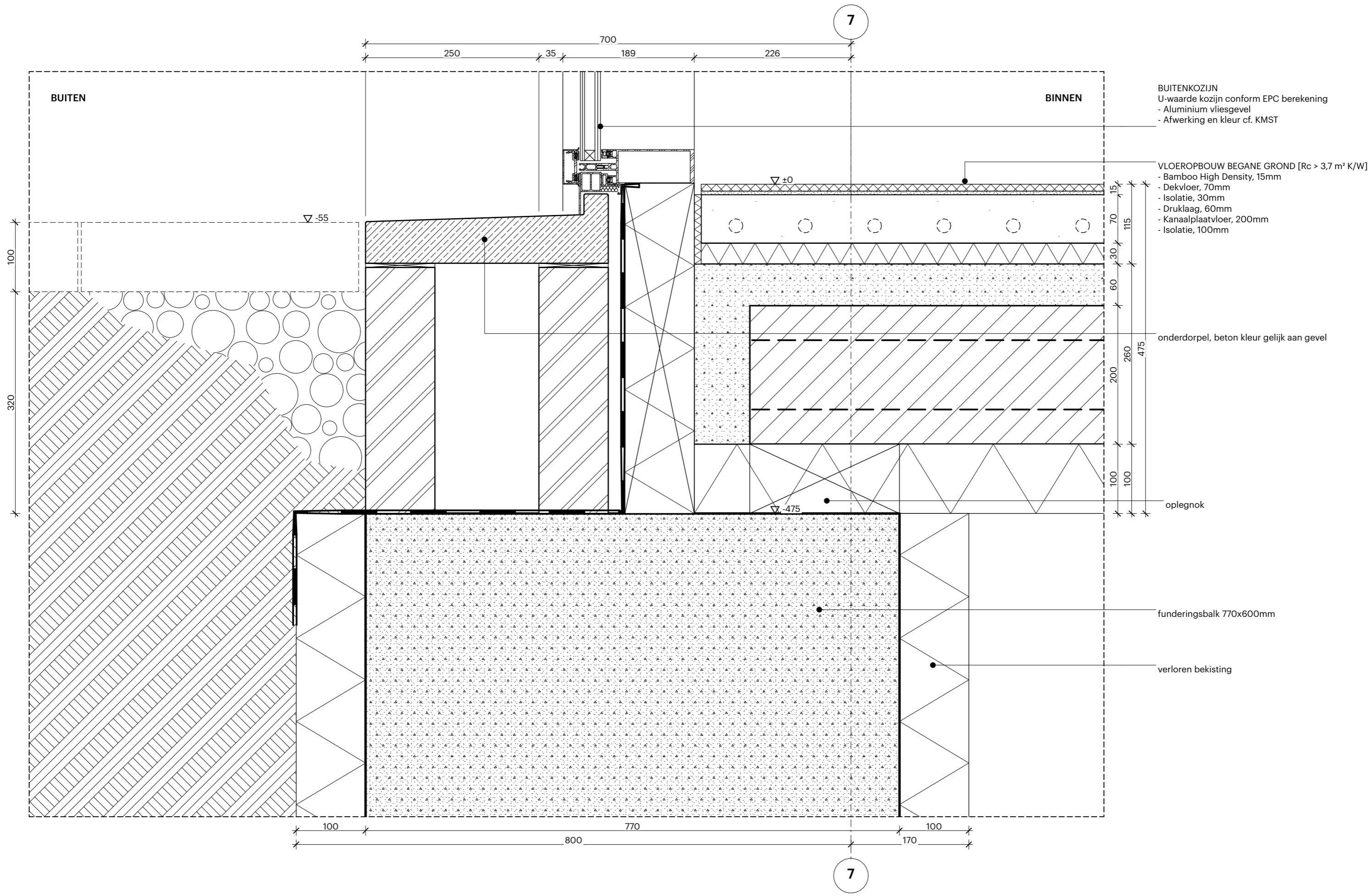


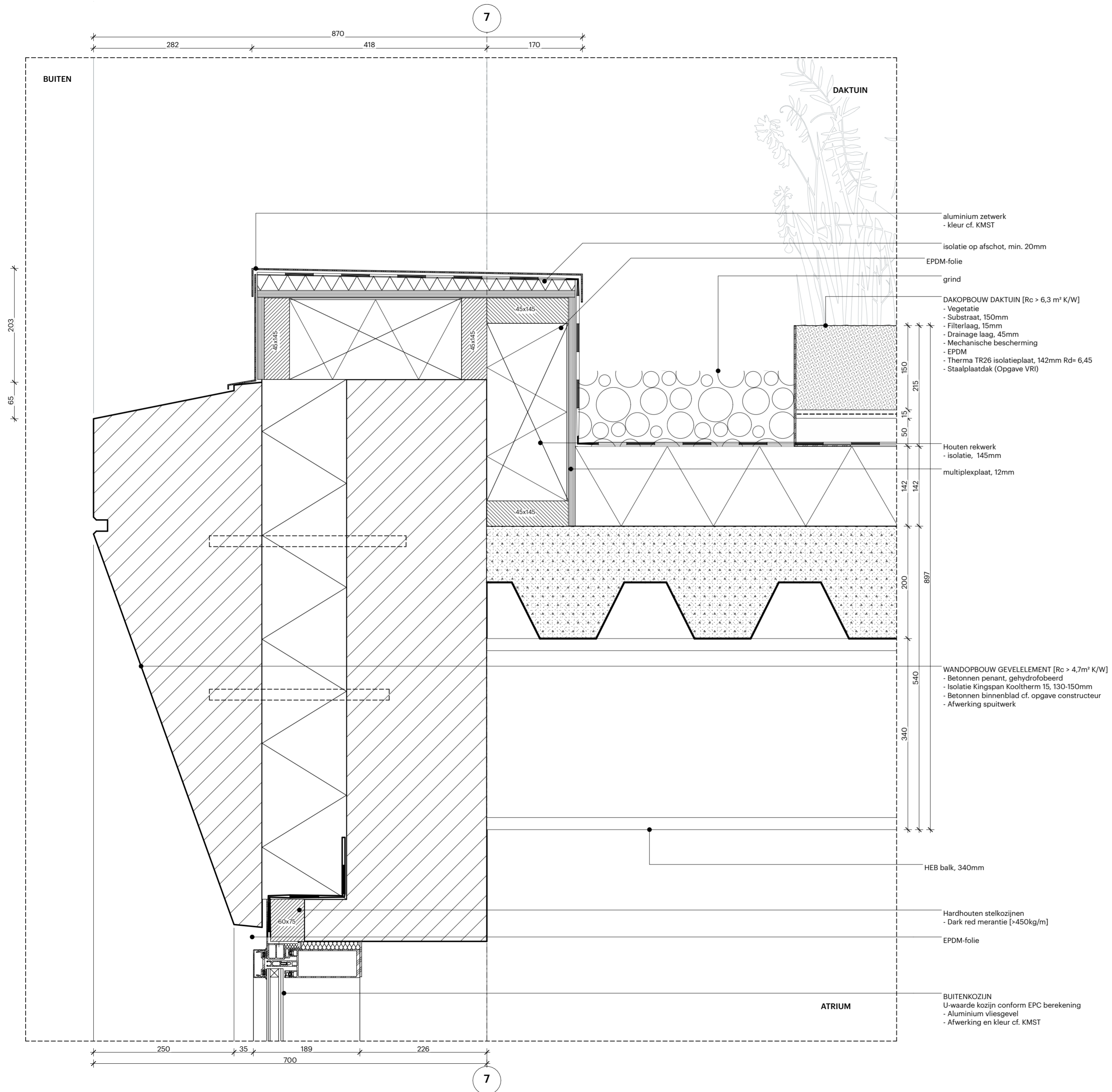




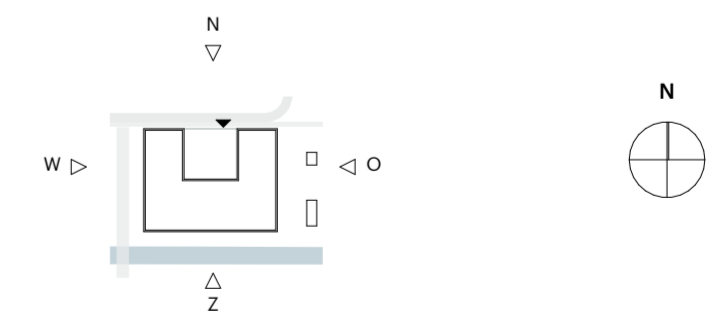








POWERHOUSE



Project
1910 Janssen Bioscience Leiden

Opdrachtgever
RED COMPANY

Fase
Omgevingsvergunning

Status
DEFINITIEF

Formaat

Schaal
1:5

Datum
23-04-2021

Revisie Datum

Onderwerp
Vliesgevel aansluiting daktuin - noordgevel

V.503.02

